



# LAKE SUPERIOR STATE UNIVERSITY

## Accessing Blackboard CE8 through my.lssu.edu

1. To login to Blackbaord, go to <http://my.lssu.edu>
2. Type in your username and password

Lake Superior State University Login - powered by SunGard SCT Inc. - Windows Internet Explorer

https://my.lssu.edu/cp/home/displaylogin

File Edit View Favorites Tools Help

Lake Superior State University Login - powered by SU...

Lake Superior State University My.LSSU

**Secure Access Login**

User Name:

Password:

Login Cancel

Having problems logging in? [Click here.](#)

[Helpful My.LSSU tips](#)

**Log In Tips**

- **User Name:** The first initial of your first name, followed by your last name, but may also contain the first initial of your middle name.
- **Password:** Returning Students - your password will be the same as the one used for Web4Students. New Students, your password was set during Orientation. Note: if you have not logged in, your password may be your date of birth (mmddyy).
- **Changing Password:** After successfully logging into My.LSSU, you can change your password using the following steps: From any main My.LSSU page, click on the My Account link (upper left corner).
- **Problems Logging In:** Contact the Registrar's Office at 906-635-2682 or the IT Help Desk at 906-635-6677.
- **Forgotten Password:** You will need to go to the Student Service Counter (Fletcher Center) or the IT Help Desk (Administration Building) with picture ID to request a password reset.
- [Course Registration Information and Dates](#)

**Forget your User Name or Password?**

- Call the IT Help Desk at x6677

**Make this my homepage**

[Instructions](#) on how to make your browser load this page on startup.

**Acceptable Use Policy**

View the LSSU [Information Technology Acceptable Use Policy \(pdf\)](#).

**What's Inside?**

- ✉ **E-mail:** Send and receive e-mail, and create your own personal address book.
- 📅 **News, Events & Calendars:** View LSSU news, events and announcements. Access and manage your personal, course and school calendars.
- 👥 **Groups:** Create, manage and join group homepages for clubs, affiliations and interests.
- 📝 **Course Registration:** Register for your classes via Anchor Access
- 🌐 **Web CT:** Access Web CT
- 💰 **Financial Aid:** Access your Financial Aid information via Anchor Access

My.LSSU FLASH DEMOS

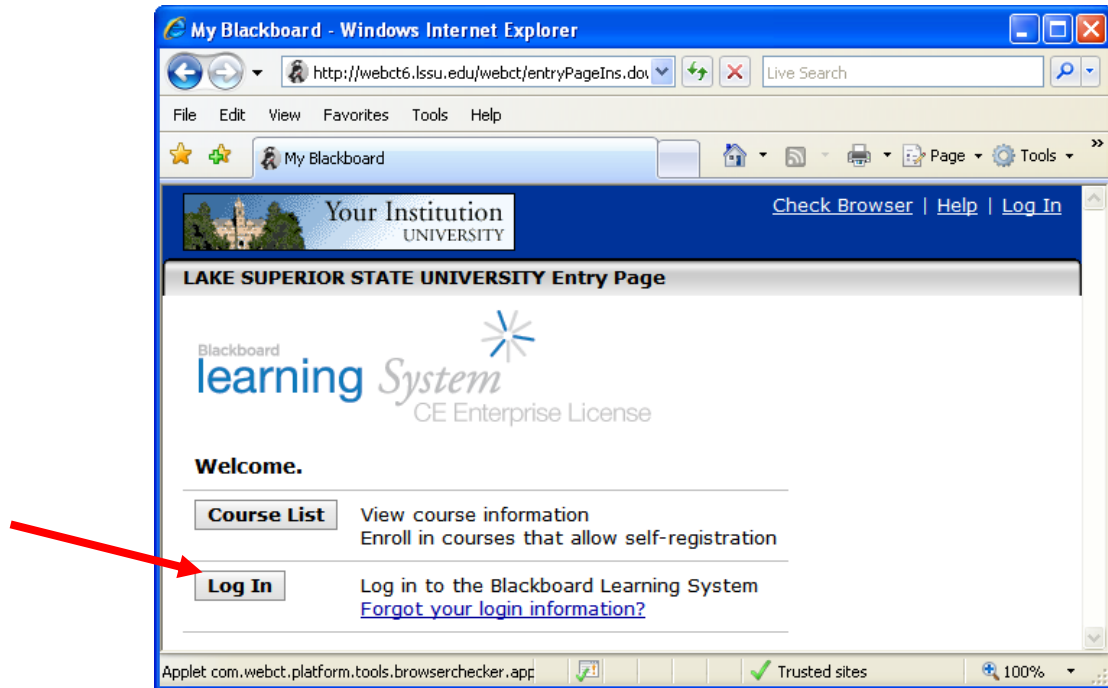
- [Add / Drop Courses](#)
- [Add Courses by CRNs](#)
- [View Status / Holds](#)
- [Course Search - STUDENTS](#)
- [Course Search - Public](#)
- [Pay with Credit Card](#)
- [Change My.LSSU Layout](#)

Done Trusted sites 100%

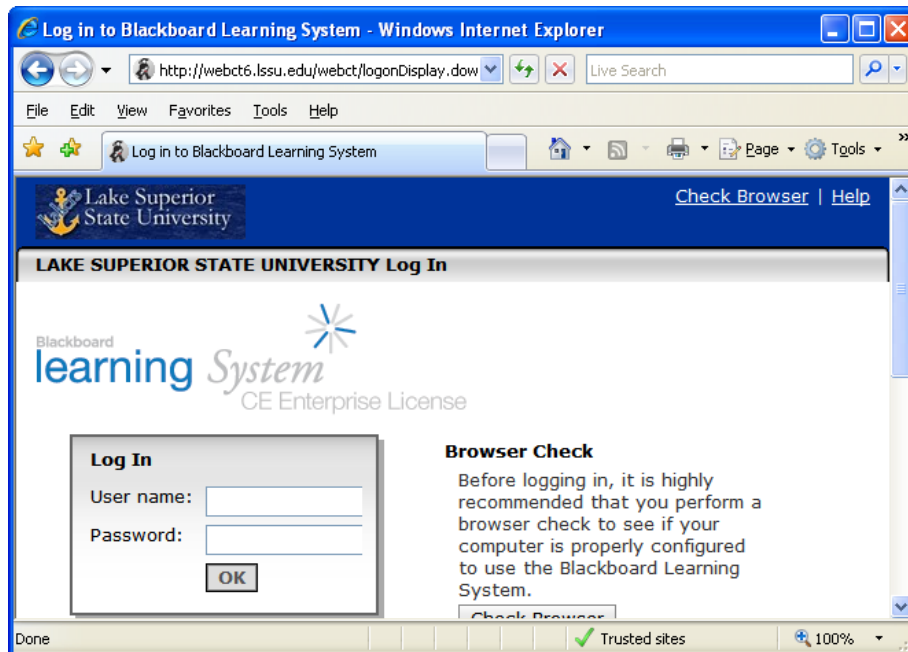
3. After successfully logging in, click on the Blackboard link from the LSSU Web Services channel, as shown below:



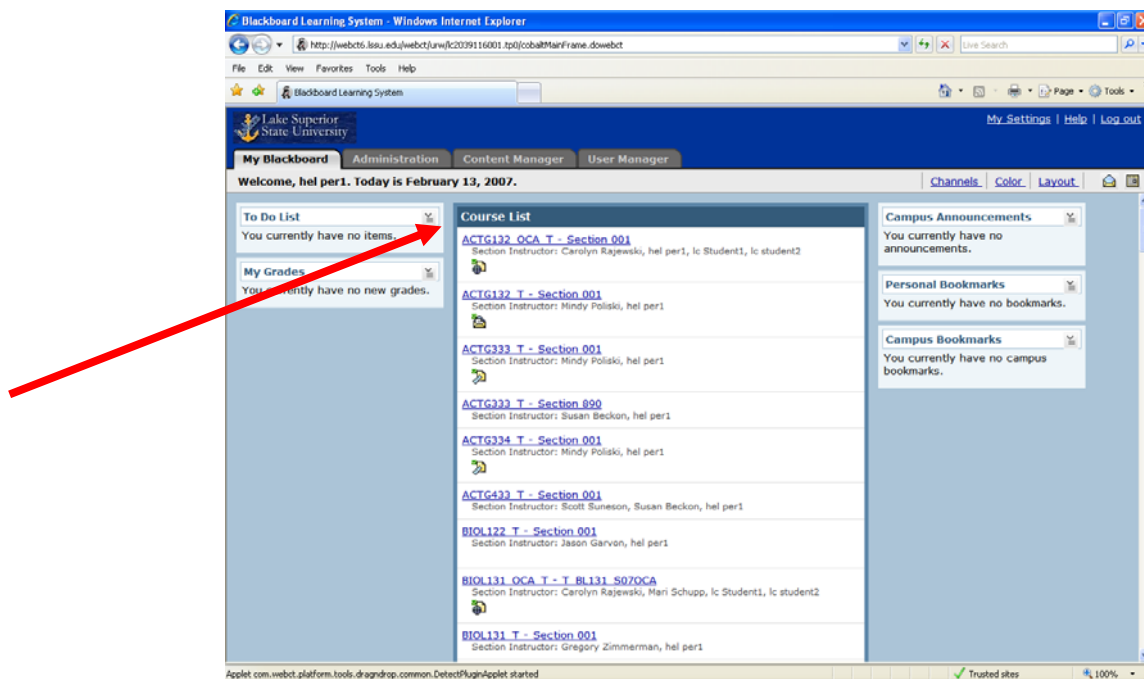
4. Click on the Log In button. (If you do not get this login screen, please go to #6)



5. Retype your username and password (same as one used to login to my.lssu.edu)



6. You should see the classes you have access to listed on the Courses List area



If you have any questions please contact the Helpdesk 906 635- 6677