



Career Services...Career Services...
 Career Services...Career Services...
Futures
 Career Services...Career Services...
 Career Services...Career Services...

October 2005

Volume 2, Issue 2

Major of the Month: Computer Networking

Career projections tell us that computer networking professionals will be in high demand for many years to come.

Strangely enough, there are very few U.S. universities and colleges that offer a 4-year degree in computer networking, especially one that provides students with hands-on experience with a variety of hardware and software.

"We created our computer networking degree program a few years ago in response to the national demand for IT professionals with networking skills," explained Tom Boger, Chair of LSSU's School of Mathematics and Computer Science. "Our graduates are reaping the benefits, finding challenging job opportunities with solid salaries."

The B.S. degree in Computer Networking is indeed unique. Students in the program work directly in multiple hardware and software environments using Linux, Novell and Windows platforms. The courses and laboratory experiences provide students with the opportunity to directly install, configure, and maintain networking hardware devices and operating systems, and also provide instruction in the development of software for use in networked environments.

While enrolled in the degree, students have the advantage of taking courses at Sault College in

Sault Ste. Marie, Ontario. This international experience not only exposes students to more experts in the field, but also provides them with access to a broader range of hardware, software, and networking topics.

"In addition to the degree, employers in the



Networking equipment at LSSU

networking field today are looking for industry certifications, hands-on

Continued on page 2...

CAREER BITS

DO YOU ENJOY?

- working with a personal computer?
- repairing electronic appliances & other mechanical gadgetry?
- doing puzzles & playing games of strategy?
- browsing the internet?
- solving analytic & logic problems?

SKILLS

- Ability to cope with constant change
- Ability to analyze, make appropriate decisions, and solve problems
- Ability to think logically
- High proficiency in the understanding and use of computers
- Ability to work under pressure

VALUES & ATTRIBUTES

- Achievement
- Continuous intellectual growth
- Curiosity & enthusiasm for gadgetry
- Sense of responsibility
- Perseverance
- Creativity

JOB OUTLOOK

Rapid growth expected as organizations continue to adopt and integrate increasingly sophisticated technologies. Job increases will be driven by very rapid growth in computer system design and related services.

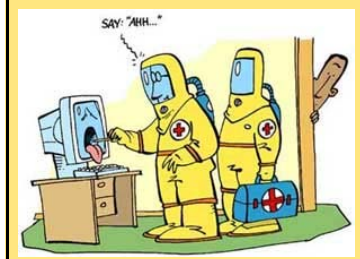
SALARY RANGE

Starting: \$36,000-\$39,000
 Median: \$47,000-\$51,500

Mandatory Advising Sessions for Liberal Arts-Undecided Students

Make sure you attend one of these advising sessions! We will go over general advising issues, scheduling procedures and remove your advising hold so you will be ready to schedule online.

WEDNESDAY, NOVEMBER 2nd 3-4PM
or TUESDAY, NOVEMBER 8th 2-4PM
MEET AT CAREER SERVICES-LIBRARY 119A



Continued from page 1...

training, and work experience," says Mark Terwilliger, associate professor in computer science. "The LSSU Computer Networking degree provides all of those things."

Many of the courses in the computer networking curriculum are designed to prepare students for the industry-standard certifications that today's employers are seeking, including certifications from Cisco, CompTIA, Novell, and Microsoft. The degree also requires a full year internship or co-operative as a capstone experience.

Graduates from this program have been finding jobs in a variety of settings. The degree is intended to prepare students for work as a network administrator, web analyst/designer/programmer, system administrator, or help desk/support specialist.

-Mark Terwilliger

To learn more about the LSSU Computer Networking degree, contact Mark Terwilliger at 635-2058 or mterwilliger@lssu.edu. LSSU also offers 2-year degrees in Internet/Network Specialist and Computer Science, as well as 4-year degrees in Computer Science, Computer and Mathematical Sciences, Computer Information Systems, and Computer Science-Secondary Teaching.

COMPUTER NETWORK SPECIALISTS work with:

- Computers and peripheral equipment
- Computer printouts
- Graphs, charts, drawings, and various other types of data
- Computer network servers and related equipment
- Cables and wiring

What Workers Say They Like

Some COMPUTER NETWORK SPECIALISTS may like:

- The challenge and variety of their work
- Good employment and advancement opportunities
- The chance to be creative
- Good salaries

COMPUTER NETWORK SPECIALISTS work for:

- All kinds of manufacturers
- Business services industries
- Banks and other financial institutions
- Insurance companies
- Wholesale and retail businesses
- Government agencies
- Research institutes
- Educational institutions
- Engineering consultants

COUNSELOR'S

CORNER



SPRING REGISTRATION COMING SOON!

As we near the mid-point of the semester students will need to check their class status. Mid-term grades will be posted on-line and your academic advisor should have this information available. This is an important time of the semester. Students should be making appointments to meet with their advisors, **you can not schedule on-line or in-line without a hold removed from your registration.** Your advisor will release this hold once you have met with him or her.

Advising involves much more than scheduling. An advisor recommends courses, strategies to overcome hurdles, and can discuss options about career choice. Spring semester scheduling begins in early November. You should begin the planning process **now** by setting up an appointment with your advisor, studying the requirements for general education and major/minor choices. Be prepared ahead of time to submit your schedule.

Liberal Arts/Undecided majors will be advised through the Career Services Office. We are holding group advising sessions on November 2, 3:00-4:00, and November 8, 2:00-4:00, in Library 119A. Please mark your calendars now to attend one of these sessions. Career Services is here to help with this process.

Mary Jo Meehan, LPC



Career Services

A division of Academic Services
Lake Superior State University
Library 119A
(across from the Learning Center)
906-635-2733
www.lssu.edu/careerservices
Hours: Monday-Friday 8am-5pm

"The first rule of any technology used in a business is that automation applied to an efficient operation will magnify the efficiency. The second is that automation applied to an inefficient operation will magnify the inefficiency." - Bill Gates