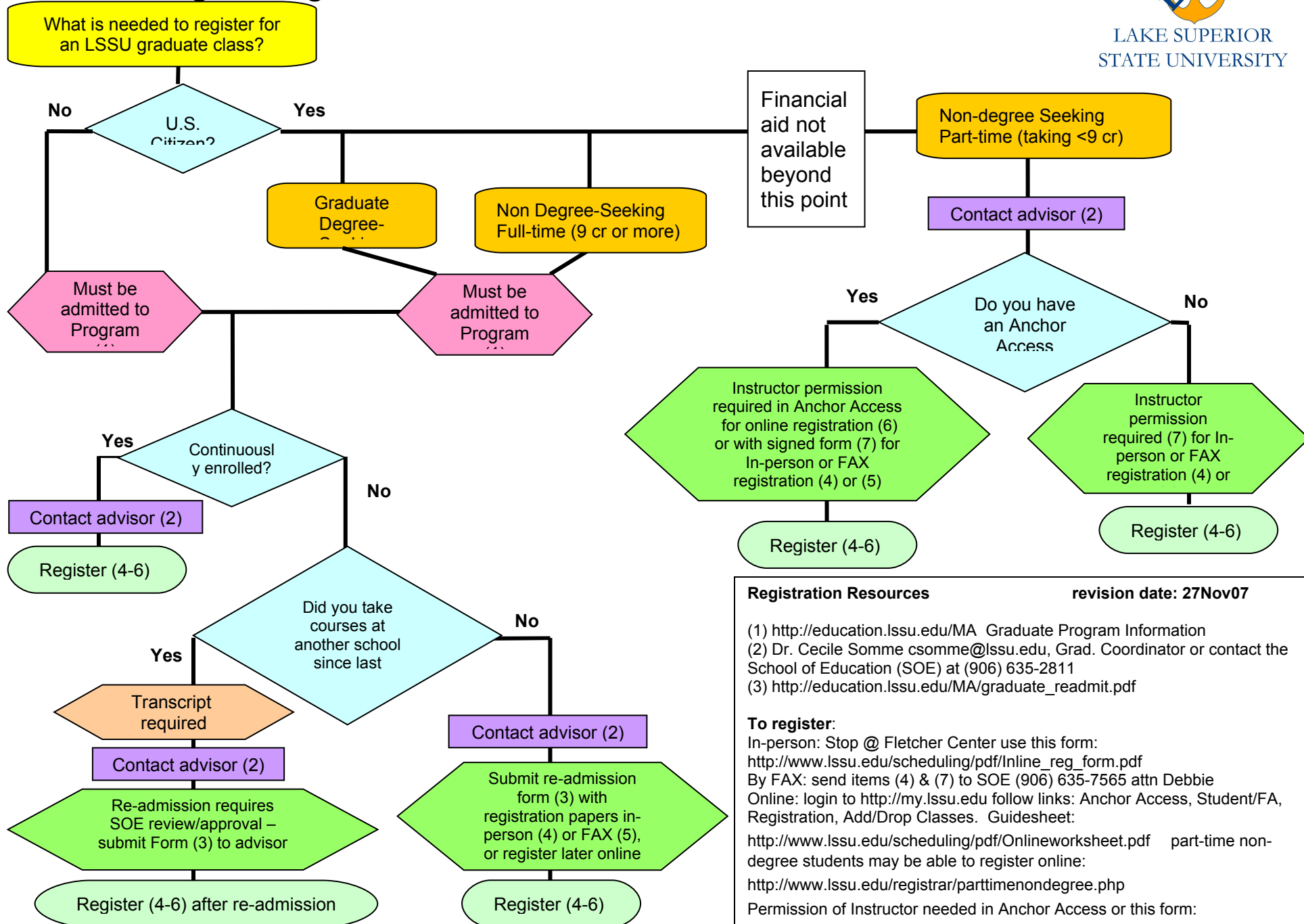




# Graduate Program Registration Process



**Registration Resources** revision date: 27Nov07

(1) <http://education.lssu.edu/MA> Graduate Program Information  
 (2) Dr. Cecile Somme [csomme@lssu.edu](mailto:csomme@lssu.edu), Grad. Coordinator or contact the School of Education (SOE) at (906) 635-2811  
 (3) [http://education.lssu.edu/MA/graduate\\_readmit.pdf](http://education.lssu.edu/MA/graduate_readmit.pdf)

**To register:**  
 In-person: Stop @ Fletcher Center use this form: [http://www.lssu.edu/scheduling/pdf/Inline\\_reg\\_form.pdf](http://www.lssu.edu/scheduling/pdf/Inline_reg_form.pdf)  
 By FAX: send items (4) & (7) to SOE (906) 635-7565 attn Debbie  
 Online: login to <http://my.lssu.edu> follow links: Anchor Access, Student/FA, Registration, Add/Drop Classes. Guidesheet: <http://www.lssu.edu/scheduling/pdf/Onlineworksheet.pdf> part-time non-degree students may be able to register online: <http://www.lssu.edu/registrar/partimennondegree.php>  
 Permission of Instructor needed in Anchor Access or this form: