

**Part Two - Obtaining Networking Software for your Computer**

Although the most recent versions of the Microsoft Windows come bundled with Internet software, we recommend that you obtain the collection of Internet software recommended by IT. To download these applications:

- Netscape Navigator
- Ws\_FTP (Free Academic Version)
- Adobe Acrobat Reader
- Tera Term

Open Internet Explorer by pressing the start button, then choosing “Programs”, “Accessories”, ”Internet Tools”, and “Internet Explorer”.

In the location box, type:

<http://www.lssu.edu/it>

Click on Downloads in the Quick Link.

## RESOURCES

IT will open Residential Network Configuration Centers during the first month of the Academic Year. These centers are available for you to bring your computer for configuration. Locations and hours will be set up in the fall. Call x6677 for details.

If you believe there is a problem with your line itself, call the IT HelpDesk at x6677 with a detailed description of your problem. Don't forget to give your name and room number. A technician will come to your room and check your line. Service calls are billed at \$25/hour for all issues not related to your network line, provided no damage occurred to the equipment as a result of misuse. Any work done on the Ethernet line, port, or network infrastructure will be done free of charge.



Information Technology  
Residential Computing

***Ethernet Guide for  
Windows XP***

# On Campus Access

LSSU Dormitories have Ethernet access. As of the time of this printing, if the current proposal for room and board fees passes, there is no charge for the service. All dormitory rooms have at least one data port, and may use an Ethernet card to access the internet 24X7.

Use of the LSSU network implies an agreement to the LSSU Acceptable Use policy, signed by LSSU Housing Residents at Check-in.

To access the Internet via our network:

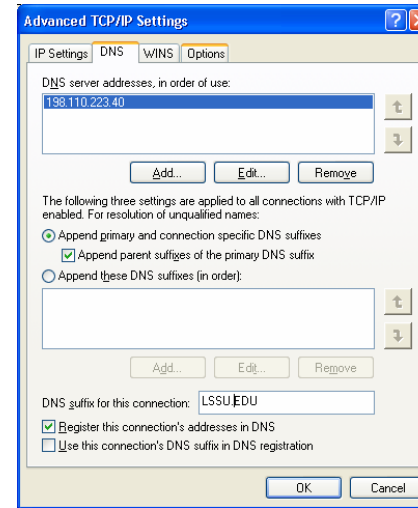
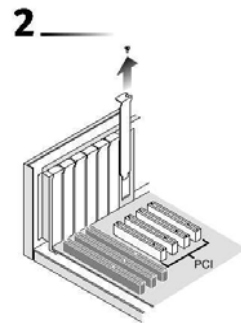
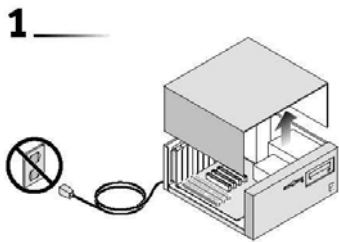
1. Determine whether you need to purchase any hardware (i.e. Ethernet card, Ethernet cable) to use the service
2. Purchase any hardware you may need. Cards, hubs, and patch cables are available at the Campus Shoppe.
3. Use the information in this guide to configure your machine.

# WINDOWS XP STEP-BY-STEP

## 3Com Fast Etherlink 10/100BASETX (3C905B)


### Installation Instructions

These illustrations show how to install the NIC in your PC and connect to the network

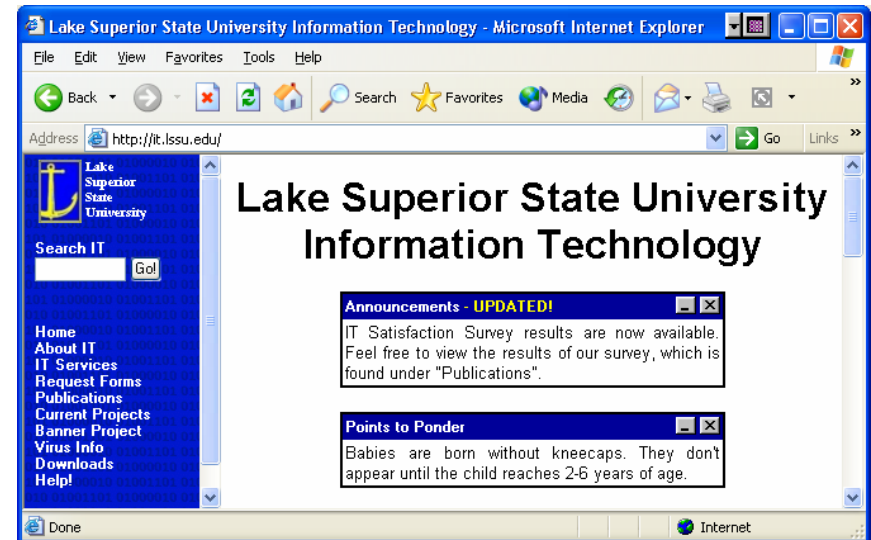


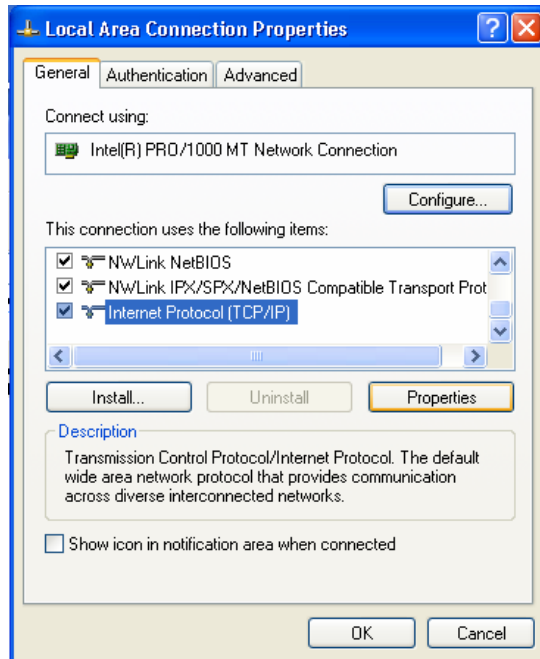
**NOTICE THE PREFERRED DNS IS ALREADY ENTERED HERE.**

**Put LSSU.EDU in the "DNS suffix for this connection:"**

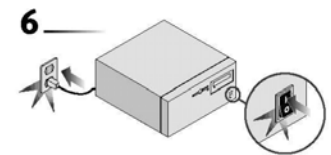
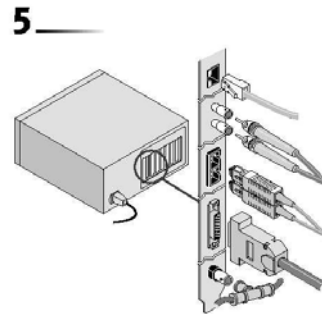
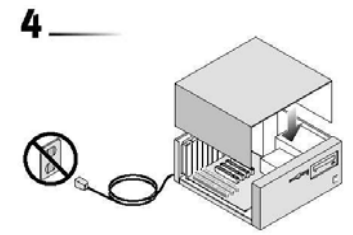
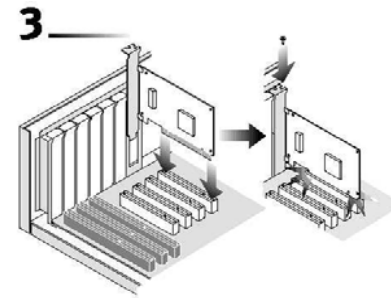
Now, just click  on all of the windows until you are asked to reboot.

Once you reboot you should be able to browse the Internet.

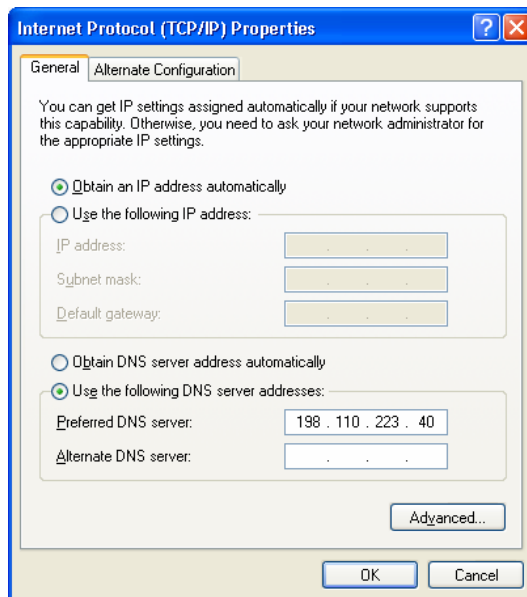




Click on Internet Protocol (TCP/IP), and click on Properties.



The next step is to install the software.



Select "Obtain an IP address Automatically"

Select "Use the following DNS server addresses:" and put 198.110.223.40 in the "Use the following DNS server address:"

Then click on "Advanced..."

## Installing the Network Driver:

This section describes how to set up your system environment when installing the NIC in a Windows 2000 PC that has a Plug and play BIOS installed.

- 1 Turn the power on and boot Windows XP.**  
The New Hardware Found screen appears. The Update Device Driver Wizard then displays.
- 2 If you have Windows XP on CD ROM, place this in your CD ROM.**
- 3 When the Wizard asks, “Do you want Windows to search for the drivers?” Click “Yes.”**
- 4 If Windows has trouble locating the drivers, type:**  
  
**D:\winnt** (where d: is the letter assigned to your CD ROM drive)  
  
**And Click OK.**

Now your computer will build a driver database and prompt you to restart the computer. Do so at this time. When the computer is restarted, you are ready to setup your Ethernet card.

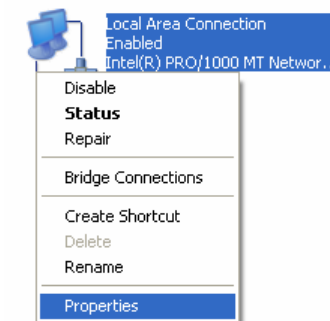
# Configuring your Windows XP Computer for Ethernet:

Once you have completed the instructions in the 3Com installation guide, you need to configure your computer for our network.

To do this, right click on the desktop icon that reads “My Network Places”, and choose “Properties”:



### LAN or High-Speed Internet



Next, Highlight “Local Area Connection”, and right click. Then select “Properties”: