



Information Technology  
Residential Computing

***Dial In Guide for  
Windows 2000***

# Off Campus Access

LSSU students who choose to live off campus; faculty and staff can use our Dial in Services to access the Internet. To use LSSU's MichNet modem pool free of charge, simply do the following:

1. Obtain a dial in account. Surf to:

<https://student.lssu.edu>

and follow the directions.

*(Faculty and staff should contact the IT Office to have an account created, or fill out the online form at <http://www.lssu.edu/it> under "Internet")*

2. Obtain, read and understand the Acceptable Use Policy. The policy is available at the IT office, or on the web at <http://www.lssu.edu/it>. Using our dial in service implies an understanding and acceptance of this policy.
3. Make sure your computer has a Windows operating system and is equipped with a working modem.
4. Take this guide home and follow the step-by-step instructions to configure your computer for our MichNet modem pool.

Off campus residents should be advised that this service is a courtesy, and is not guaranteed. Technical Support is not a part of this service. IT can attempt to answer your questions over the phone, but cannot provide in-home service.

LSSU leases 36 modem connections from MichNet for use by students, faculty, and staff. The modem pool does suffer from congestion at times. The following list of Private Internet Service Providers in the area may be better equipped to deliver guaranteed service:

#### Lighthouse Computers

826 Ashmun Street  
Sault Sainte Marie, Michigan 49783  
(906) 632-1820 (888) 883-3393

#### Portup.com

506 Sheldon Ave.  
Houghton, MI 49931  
1-888- 4Portup (906) 487-9832

#### Northern Way

531 Ashmun  
Sault Ste Marie 49783  
(906) 635-7000

#### UP.net

<http://www.up.net> 1-800-290-2209

#### Iceberg Computers

Sault Sainte Marie, MI 49783 632-3722

# **TROUBLESHOOTING**

## Windows 2000 Tips

*NOTE: Windows 2000 may ask you to choose a computer name and workgroup. Enter your username for the computer and Student for the workgroup name. You may leave the computer description field blank. (When Windows 2000 restarts it may also begin to ask for a username and password to log on; simply enter your username in the username field and leave the password field blank).*

The following information represents the best case scenario. Windows 2000 has the ability to automatically detect the presence to the Modem. Upon the first restart after installing the new modem, Windows 2000 will attempt to select and load the Internet modem drivers without any intervention from you. Listed below are a few problem scenarios. Follow the scenario that applies to your situation.

*I've done everything, its just not working*

This happens from time to time. A commonly useful solution is to start the process over, undoing past installations. Then repeat the installation, carefully reading and completing each part properly. When it's difficult for a technician to isolate a problem, this is the first thing we try.

*LSSU does not provide support for privately owned computers. We are happy to give you advice regarding your configuration, but liability prevents us from working on personal machines. Configuration of personal computers is the owners' responsibility, and LSSU is not responsible for any damage caused during configuration. Any advice received from LSSU should be followed with this in mind.*

- 15) 2) You can test this connection by clicking [Start ], choosing [Run] and clicking OK. In the resulting screen, at the C:\ prompt, type  
 Ping student.lssu.edu  
 And hit [Enter]  
 The following text should appear:

Pinging 198.110.216.219 with 32 bytes of data:  
 Reply from 198.110.216.219: bytes=32 time=271ms TTL=254  
 Reply from 198.110.216.219: bytes=32 time=270ms TTL=254  
 Reply from 198.110.216.219: bytes=32 time=276ms TTL=254  
 Reply from 198.110.216.219: bytes=32 time=278ms TTL=254

If this worked, then you are now connected to the internet! You can run all your normal Winsock apps, and also 32-bit Winsock apps.

If this did not work, go over all the steps we went through. Make sure you did everything correctly. For tech support call (906)-635-6677 or e-mail [help@lssu.edu](mailto:help@lssu.edu).

**Part Two - Obtaining Networking Software for your Computer**

Although the most recent versions of the Microsoft Windows come bundled with Internet software, we recommend that you obtain the collection of Internet software recommended by IT. To download these applications:

- Ws\_FTP (Free Academic Version)
- Adobe Acrobat Reader
- Tera Term

Open Internet Explorer by pressing the start button, then choosing “Programs”, “Accessories”, ”Internet Tools”, and “Internet Explorer”.

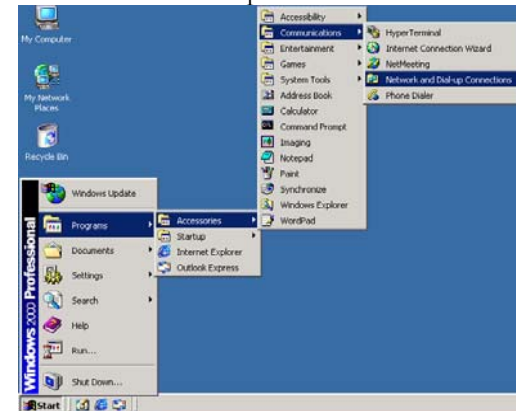
In the location box, type:  
<http://www.lssu.edu/it>  
 Click on the [Downloads] link for instructions.

# WINDOWS 2000 Setup

## Part One -

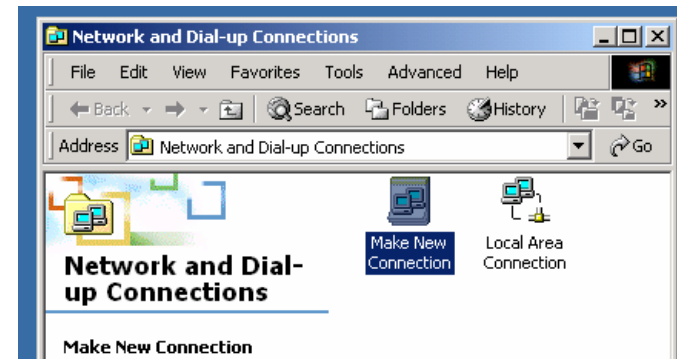
### Setting Up Dial-Up Networking:

- 1) Click on Start, Programs, Accessories, Communications, Network and Dial-up Connections :

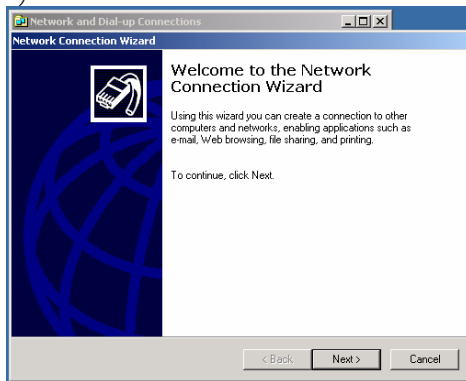


This will start a wizard to run you through the setup process.

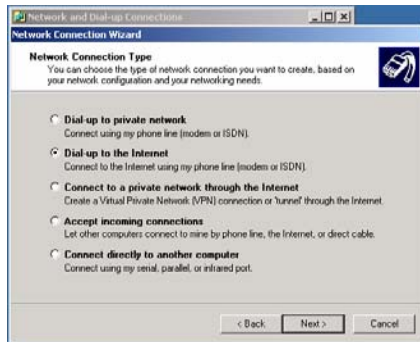
- 2) Now, Double click on "Make New Connection".



3) Then the "Network Connection Wizard" will start, Click Next.



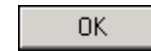
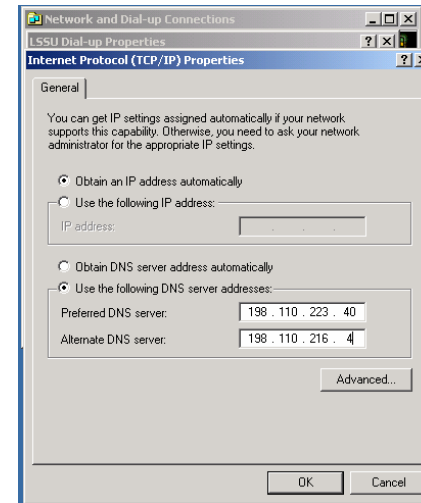
4) Then click on the "Dial-up to the Internet" circle and make sure the dot is in the middle. Then Click Next.



5) The next step would be to Check off "I want to set up my internet connection manually,..," and Click Next.

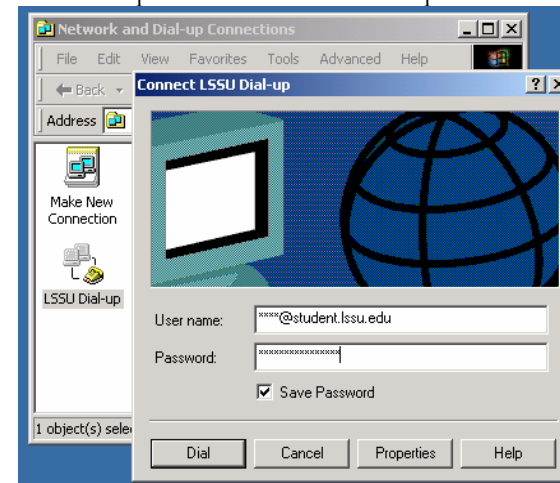


15) We should now be "Internet Protocol (TCP/IP) Properties". Make sure to check off "Obtain an IP address automatically" and "Obtain DNS server address automatically"



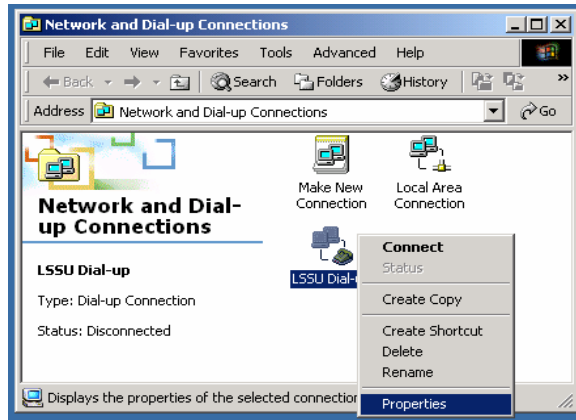
Then Click until the only

Window up is "Network and Dial-up Connections"



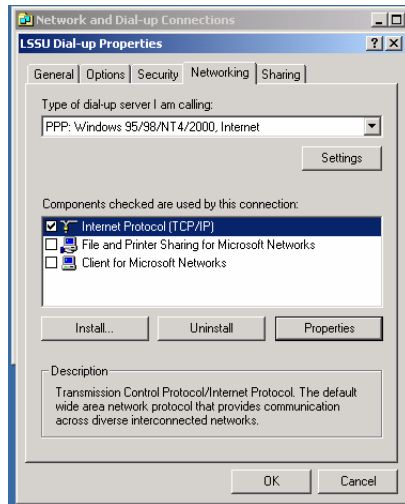
16) Then just double click on the Dial-up connection we created to get on the Internet.

13) The Network and Dial-up Connections window should be up with the LSSU Connection.



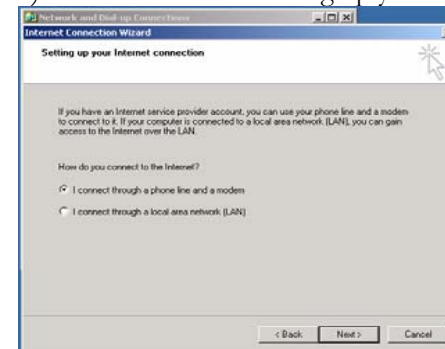
Right-Click on the icon and select Properties.

14) "(Your Connection name) Properties" windows should be open.



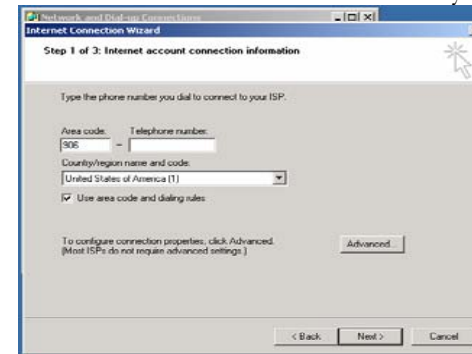
Select "Internet Protocol (TCP/IP)" and click on Properties.

6) Now that we are "Setting up your Internet connection"



we will select "I connect through a phone line and a modem". Then click Next.

7) We should now be on Step 1 of 3. The telephone number should be the connection number for your area.



They are as follows:

**Our dial up numbers**

DeTour	906-297-3172	Petoskey	231-347-1715
Engadine	906-477-8096	Rudyard	906-478-6330
Escanaba	906-789-2034	St. Ignace	906-643-0077
Mackinac Island	906-847-0083	<b>Sault Ste. Marie</b>	<b>906-635-1533</b>
Marquette	906-226-3891	Traverse City	231-941-9826
Newberry	906-293-2982	Trout Lake	906-569-0013

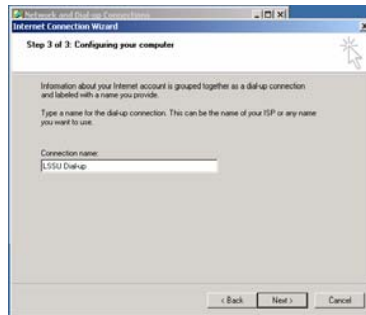
Also, make sure that your area code is correct, you use area code rules, and your country is U.S.A.

Click Next.

8) We should now be on Step 2 of 3. Enter your username and password in the boxes provided and click Next.



9) Now we are on Step 3 of 3. This is where we name our Connection. You can call it anything you wish as long as you can remember what the name is so you know what it is later. Then Click Next.



10) This is the spot in the installation where we set up your E-mail account. We will be skipping this step in the tutorial. So, click No and then click Next.



11) We have now come to the end of the wizard section. Un-Check the box "To connect to the Internet." and click Finish.



12) We now only have 4 steps till we are on the Internet. Click on Start, Programs, Accessories, Communications, Network and Dial-up Connections.

