

LAKE SUPERIOR STATE UNIVERSITY

Reaffirmation of Accreditation



Presentation to Cabinet April 7, 2015

http://wallpaperswide.com/chicken_title_funny-wallpapers.html

Lake Superior State University
www.lssu.edu

LAKE SUPERIOR STATE UNIVERSITY

“The team was unable to discern any demonstrable evidence regarding either the assembling, or the integration, of constituent assessment activities that were taking place on campus into an institutional database, or any locally preferred equivalent.

Lake Superior State University
www.lssu.edu

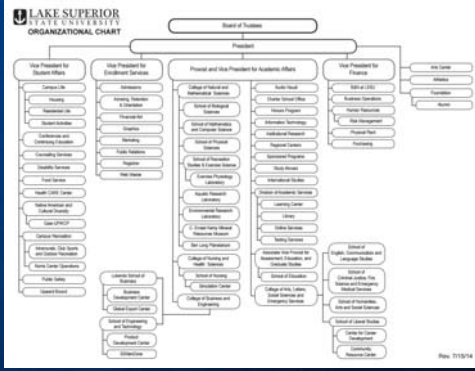
LAKE SUPERIOR STATE UNIVERSITY

Nor was the team shown evidence that whatever data that were either available to, or acquirable by, the institution were being *analyzed to inform* the planning and execution of **academic, administrative, and support programs**, and other activities that are important to LSSU’s future.” (HLC visiting team 2011 p.16)

Lake Superior State University
www.lssu.edu

LAKE SUPERIOR STATE UNIVERSITY

ORGANIZATIONAL CHART



Lake Superior State University
www.lssu.edu

LAKE SUPERIOR STATE UNIVERSITY

Resources, Planning and Institutional Effectiveness

5.C. The institution engages in **systematic and integrated planning**

1. The institution allocates its resources in alignment with its mission and priorities

5.D. The institution works **systematically** to improve its performance.


1. The institution develops and documents evidence of performance in its operations

Lake Superior State University
www.lssu.edu

LAKE SUPERIOR STATE UNIVERSITY

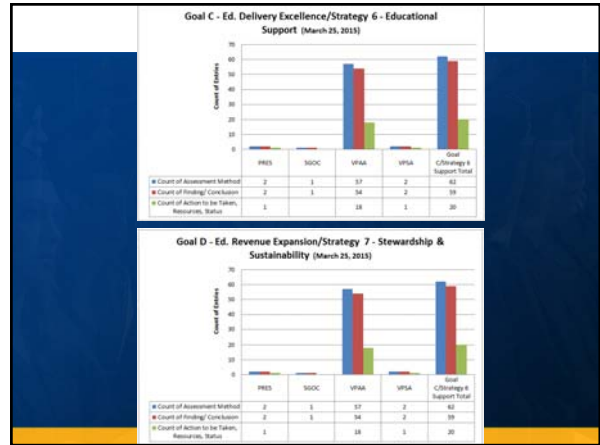
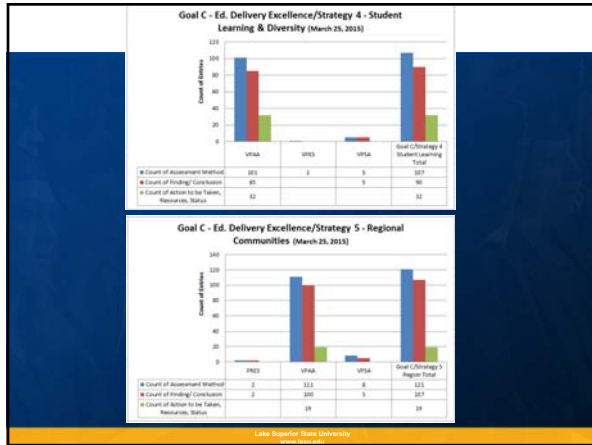
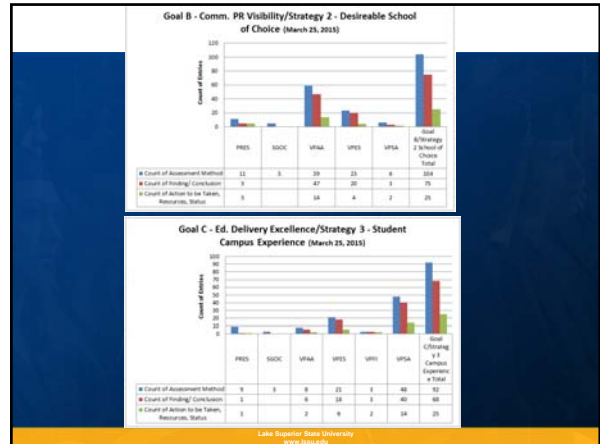
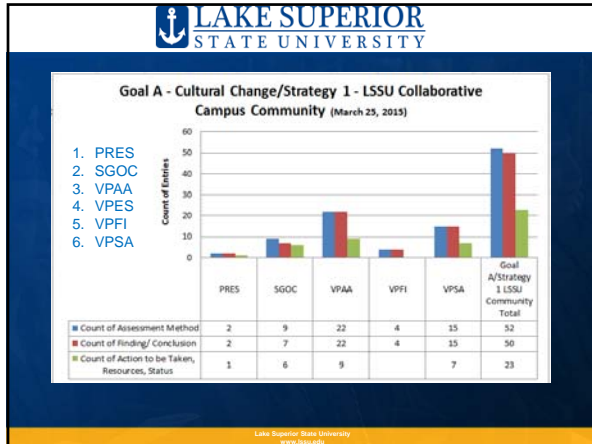
STRATEGIC PLAN ASSESSMENT

of Units reporting assessment activity by Goal/Strategy (out of 50 units)



Goal/Strategy	Percentage of Units
Goal A/Strategy 1 LSSU Community Total	34.0%
Goal B/Strategy 2 School of Choice Total	52.0%
Goal C/Strategy 3 Campus Experience Total	38.0%
Goal C/Strategy 4 Student Learning Total	34.0%
Goal C/Strategy 5 Region Total	34.0%
Goal C/Strategy 6 Support Total	32.0%
Goal D/Strategy 7 Stewardship Total	20.0%

Lake Superior State University
www.lssu.edu



Strategic Plan Summary Report 2012-2013

Overall Goals

Strategy	Overall Goal
Strategy 1 Collaborative, Connected Campus Community	D
Strategy 2 Desirable School of Choice	B
Strategy 3 Student Campus Experience	B
Strategy 4 Student Learning and Development	B
Strategy 5 Regional Communities	C
Strategy 6 Educational Support	D
Strategy 7 Stewardship and Sustainability	C

Strategic Initiatives

Initiative	VPAA	VPES	VPFI	VPSA	ASSESS
Strategy 1, C	8			8	0

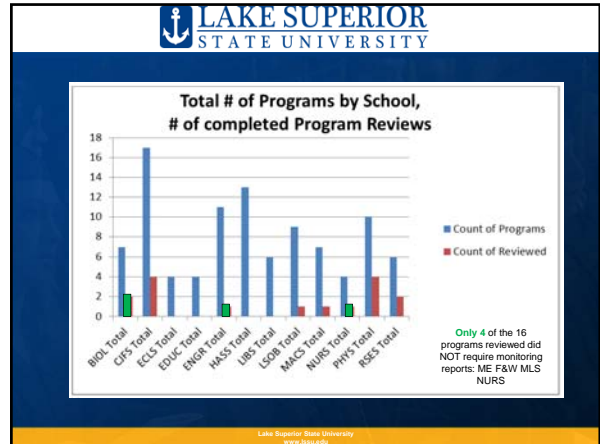
Strategic Initiatives Matrix

Strategic Initiative	VPAA	VPES	VPFI	VPSA	ASSESS
Office of President					
Office of Provost & VP Academic Affairs					
Office of VP Finance					
Office of VP Student Affairs					
Office of VP Academic Programs					
University Strategy for Strategic Planning					
Strategy 1 Collaborative, Connected Campus Community					
Strategy 2 Desirable School of Choice					
Strategy 3 Student Campus Experience					
Strategy 4 Student Learning and Development					
Strategy 5 Regional Communities					
Strategy 6 Educational Support					
Strategy 7 Stewardship and Sustainability					

Program Review

4.A. The institution demonstrates responsibility for the quality of its educational programs.

1. The institution maintains a practice of regular program reviews



LAKE SUPERIOR STATE UNIVERSITY

Assessment of Student Learning

4.B. The institution demonstrates a commitment to educational achievement and improvement through **ongoing assessment** of student learning.

1. The institution has clearly stated goals for student learning and effective processes for assessment of student learning and achievement of learning goals.
2. assesses achievement of the learning outcomes that it claims for its curricular and co-curricular programs.
3. uses the information gained from assessment to improve student learning.
4. has processes and methodologies to assess student learning reflect good practice, including the substantial participation of faculty and other instructional staff members.

Lake Superior State University
www.lssu.edu

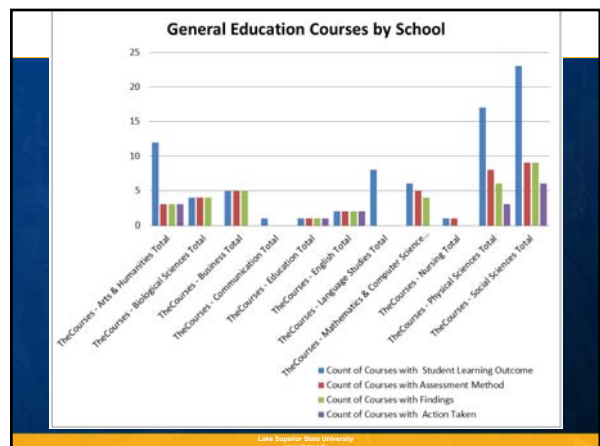
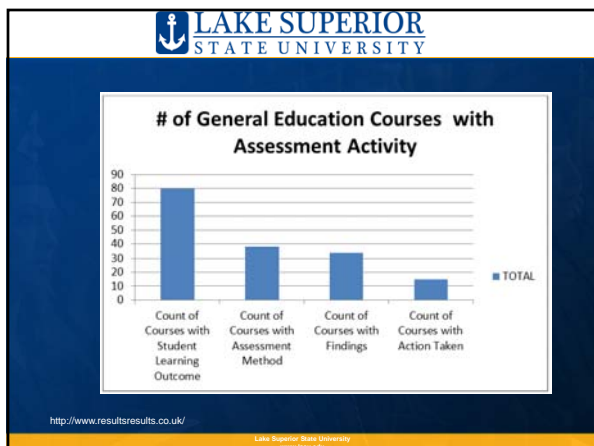
LAKE SUPERIOR STATE UNIVERSITY

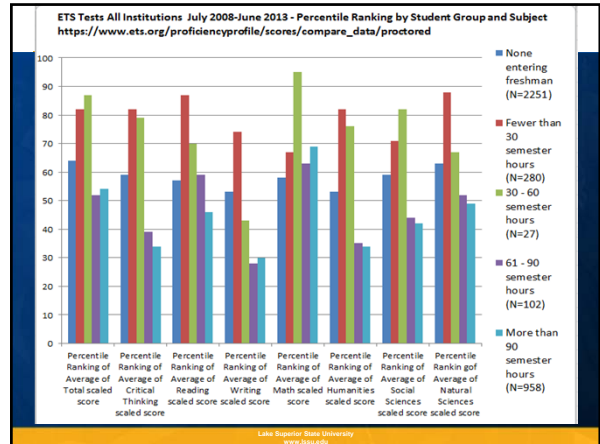
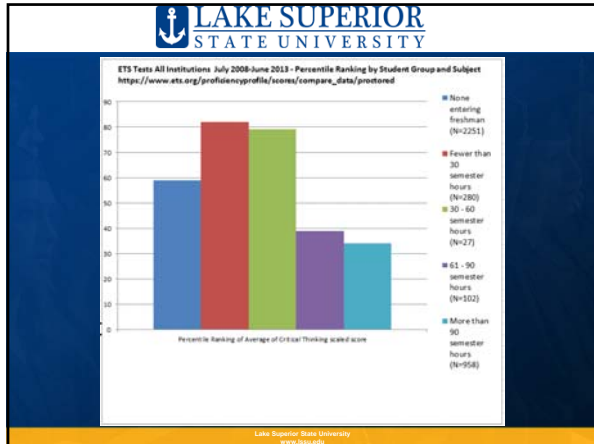
General Education

Core Component 3.B

1. The general education program is appropriate to the mission, educational offerings, and degree levels of the institution.
2. The institution articulates the purposes, content, and intended learning outcomes of its undergraduate general education requirements...

Lake Superior State University
www.lssu.edu



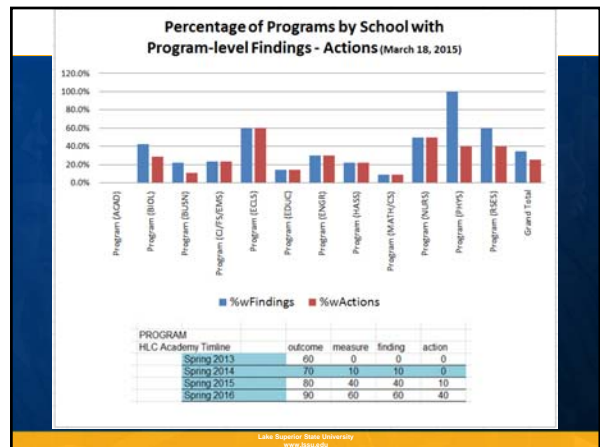
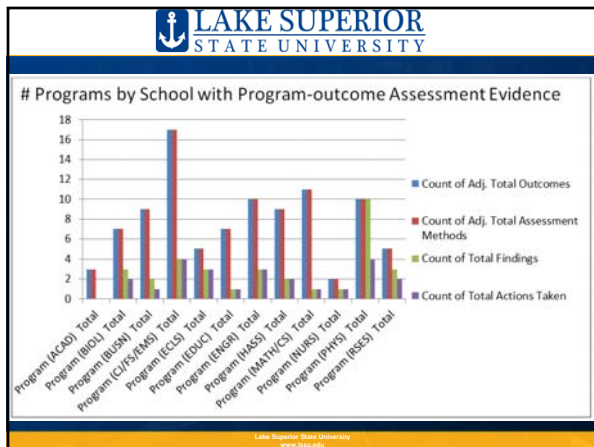
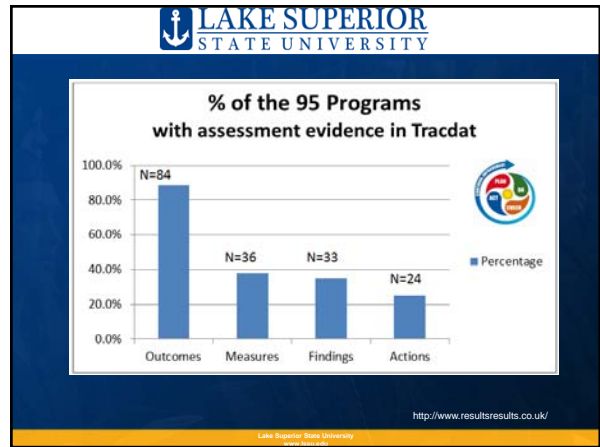


LAKE SUPERIOR STATE UNIVERSITY

Program-level Assessment


<http://www.resultsresults.co.uk/>

Lake Superior State University
www.lssu.edu



LAKE SUPERIOR STATE UNIVERSITY

Course-level Assessment

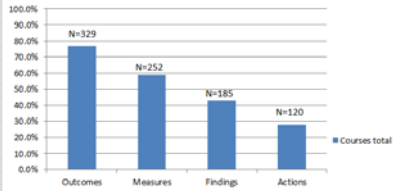


<http://www.resultsresults.co.uk/>

Lake Superior State University
www.lssu.edu

LAKE SUPERIOR STATE UNIVERSITY

% of Spring 2014 Courses with documented assessment activity

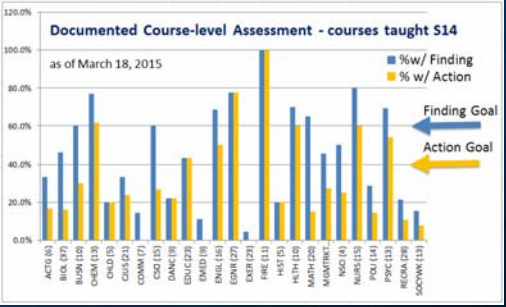


COURSE	outcome	measure	finding	action	
HLC Academy Term	Spring 2013	60	20	20	10
	Spring 2014	70	40	40	20
	Spring 2015	80	60	60	40
	Spring 2016	60	60	60	60

Lake Superior State University
www.lssu.edu

LAKE SUPERIOR STATE UNIVERSITY

Documented Course-level Assessment - courses taught 514 as of March 18, 2015



Academy Goals for spring 2015

Lake Superior State University
www.lssu.edu

LAKE SUPERIOR STATE UNIVERSITY

“The team was unable to discern any demonstrable evidence regarding either the assembling, or the integration, of constituent assessment activities that were taking place on campus into an institutional database, or any locally preferred equivalent.

Lake Superior State University
www.lssu.edu

LAKE SUPERIOR STATE UNIVERSITY

Nor was the team shown evidence that whatever data that were either available to, or acquirable by, the institution were being *analyzed to inform* the planning and execution of **academic, administrative, and support programs**, and other activities that are important to LSSU’s future.” (HLC visiting team 2011 p.16)

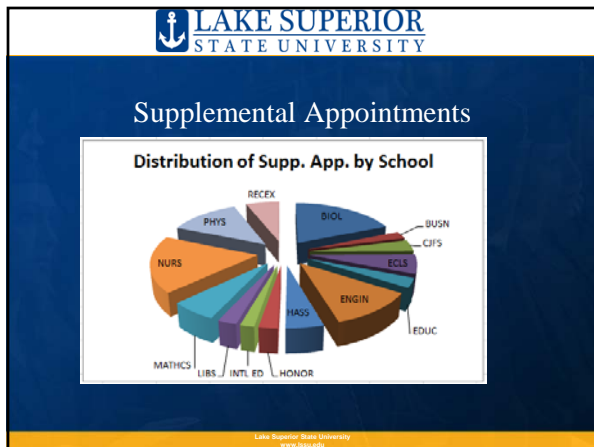
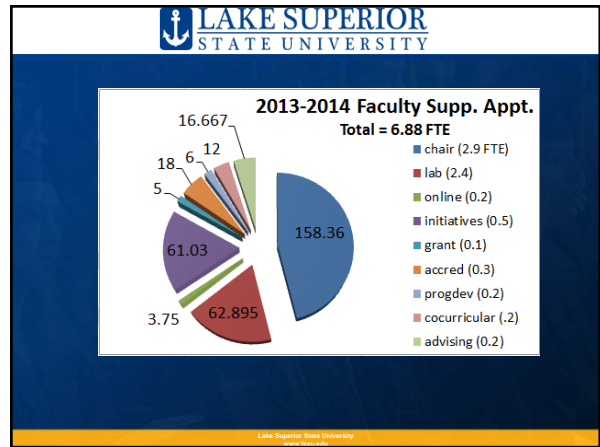
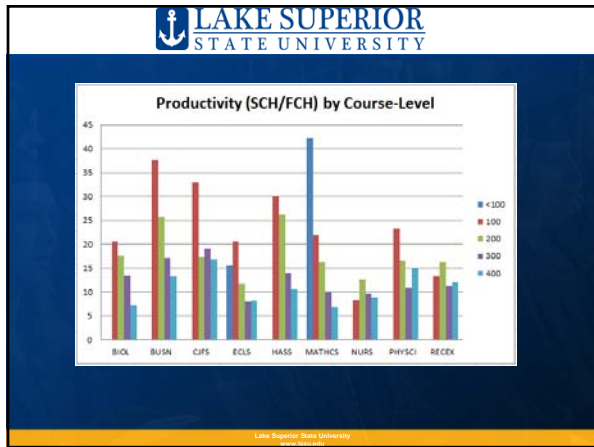
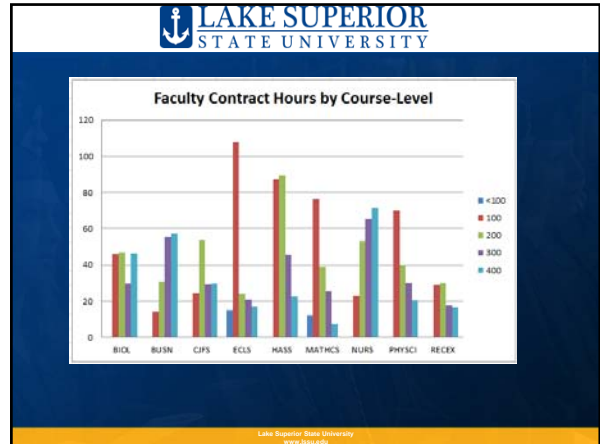
Lake Superior State University
www.lssu.edu

LAKE SUPERIOR STATE UNIVERSITY

General Effectiveness

3.C. The institution has the faculty and staff needed for effective, high-quality programs and student services.

Lake Superior State University
www.lssu.edu



LAKE SUPERIOR STATE UNIVERSITY

November 14, 2014 Status of Course Assessment by School

School Group	Count of Course ID	Count of Total Courses with Student Learning Outcomes	Count of Courses with Assessment Methods	Count of Courses with Findings to be Taken	% of courses with outcomes	% of courses with assess. Methods	% of courses with findings	% of courses with actions
BIOL	69	36	34	29	52.2%	49.3%	42.0%	24.6%
BUSN	66	41	30	16	62.1%	45.5%	24.2%	9.1%
CFS	77	71	46	29	92.2%	59.7%	36.4%	11.7%
ECLS	85	37	21	16	43.5%	24.7%	19.8%	14.1%
EDUC	46	29	21	19	63.0%	45.7%	41.3%	37.0%
ENGR	55	55	55	48	100.0%	100.0%	87.3%	87.3%
HASS	196	74	40	31	37.8%	20.4%	15.6%	10.2%
LIBS	10	4	3	1	40.0%	30.0%	10.0%	0.0%
MACS	69	48	47	37	69.6%	68.1%	53.6%	4.3%
NURS	42	39	32	27	92.9%	76.2%	64.3%	38.1%
PHYS	75	45	35	30	60.0%	46.7%	40.0%	24.0%
PROV	12	6	5	4	50.0%	41.7%	33.3%	8.3%
RSES	81	73	38	13	90.1%	46.9%	16.0%	6.2%
Grand Total	883	556	407	299	63.2%	46.1%	33.9%	19.5%

COURSE	Spring 2013	Spring 2014	Spring 2015	Spring 2016
HLC Academy Timeline	60	20	20	10
	70	40	40	20
	80	60	60	40
	90	80	80	60

Lake Superior State University
www.lssu.edu

