

# Educational Goals

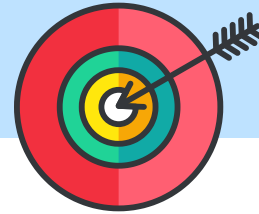
## Authorizer Required Goals



### Student Growth

Student Conditional Growth Percentiles will be at 50 or above indicating that students are growing like the average "like" learner.

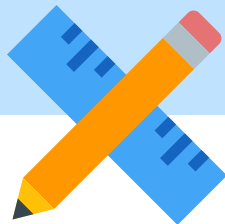
Measure 1



### Student Achievement

Cohort students will reach achievement targets AND outperform non-cohort students. Cohort students are those who have attended an academy for 3 or more years. Non-cohort students have attended an academy for less than 3 years.

Measure 2



### State & Federal Accountability

The Academy will satisfy state and federal requirements.

Measure 3



### Academy Specific Goals

These goals are optional (but encouraged) and unique to each academy.

Measure 4