



Charter Schools Report
November 17, 2023

Agenda Item #1: Charter Schools Dashboard Metric

Information

Action

Discussion

Purpose:

The purpose of this information is to provide key statistics related to Charter Schools.

Background:

N/A

Suggested Action/Motion:

None

President's Recommendation:

N/A

	2019-20	2020-21	2021-22	2022-23	2023-24	Current Status/Trend	Notes
LSSU Authorized Academies	21	21	21	21	19	↓	26 total sites
LSSU Authorized Academies Enrollment	9,274	9,252	9,248	9,048	8,815	↓	Estimated Fall Enrollment Counts
Academy Compliance Percentages (Epicenter Database On time/Accurate)	92/98	95/98	89/97	89/97	-----	↔	Over 2,300 documents submitted
Authorizer Accreditation (Cognia) Assurance and Verifications	--	--	Accredited	-----	Valid to 2027	↔	A&V completed my MDE and MCCSA
LSSU 3% Oversight Revenue in 3% Fund	\$2,447,516	\$2,490,784	\$2,575,224	\$2,712,556	\$2,540,000	↓	Projected 3% Revenue for FY24
Transfer to General Fund from 3% Fund	\$950,000	\$1,108,334	\$950,000	\$1,500,000	\$950,000	↓	Budgeted Transfer to GF for FY24
Ending Fund Balance in 3% Funds	\$720,037	\$543,028	\$963,637	\$552,879	----	↑	Projected Fund Balance
Charter School Office Expenditures	\$1,207,378	\$1,125,503	\$1,091,685	\$1,271,357	\$1,400,000	↑	Projected Budgeted Expenditures
Outreach/Camps Participation Numbers	1,687	165	613	701	TBD	↑	Projecting 6-9 Camps
Former Charter School Students attending LSSU	21	22	26	12	5	↓	
Dual /Concurrent Enrollment students from Charters taking LSSU classes	77	152	81	114	36 Fall	↓	Fall- 36 Spring-TBD
Professional Development Offerings to Academy Boards on quality Governance and Oversight	Summer Retreat 1 Legal 5 Webinars	9 Webinars	12 Webinars	10 Webinars	5 Webinars 5 On Demand 5 Face to Face	↑	Partnering with MCCSA on Webinar Series Regional PD
Professional Development Offerings to Academy Staff	25+ Sessions	25+ Sessions	25+ Sessions	25+ Sessions	25+ Sessions	↔	Multiple sessions on several topics
Chartering Laker Scholarship	\$6,000	\$5,500	\$6,500	\$6,000	\$8,000	↑	YTD

* The Charter Schools Office has one reauthorization for the 23-24 school year.



Charter Schools Report
November 17, 2023

Agenda Item #2: Academic Support Dashboard

Information

Action

Discussion

Purpose:

The purpose of this information is to provide key statistics related to Charter Schools.

Background:

N/A

Suggested Action/Motion:

None

President's Recommendation:

N/A

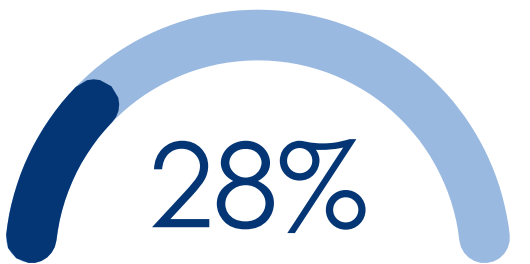
LSSU Charter Schools

SCHOOL INDEX SUMMARY

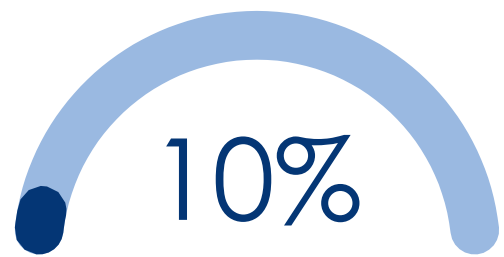
Category Classifications

Support Category	Support Category Full Name	Entrance Criteria	Frequency/Duration of Support Category
CSI	Comprehensive Support and Improvement	<ul style="list-style-type: none"> School has an overall index value in the bottom 5% OR School has a 4-year graduation rate of 67% or less OR School was in a CSI cohort and did not exit CSI OR School was in an ATS cohort and did not exit ATS 	3 years
ATS	Additional Targeted Support	School has both: (1) One or more student subgroups in the bottom 25% of each applicable component (2) AND one or more student subgroups in the bottom 5% overall	6 years
TSI	Targeted Support and Improvement	School has at least one student subgroup at or below bottom 25% for each applicable component	Yearly

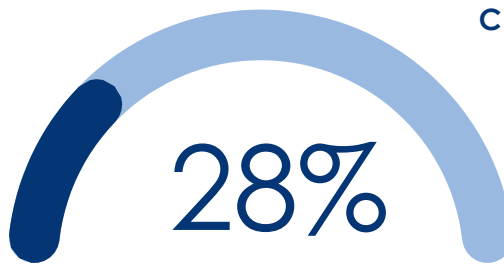
Notable Statistics



THERE ARE 255 SCHOOL DISTRICTS ON THE CSI LIST, OF THAT 28% ARE CHARTER SCHOOLS.

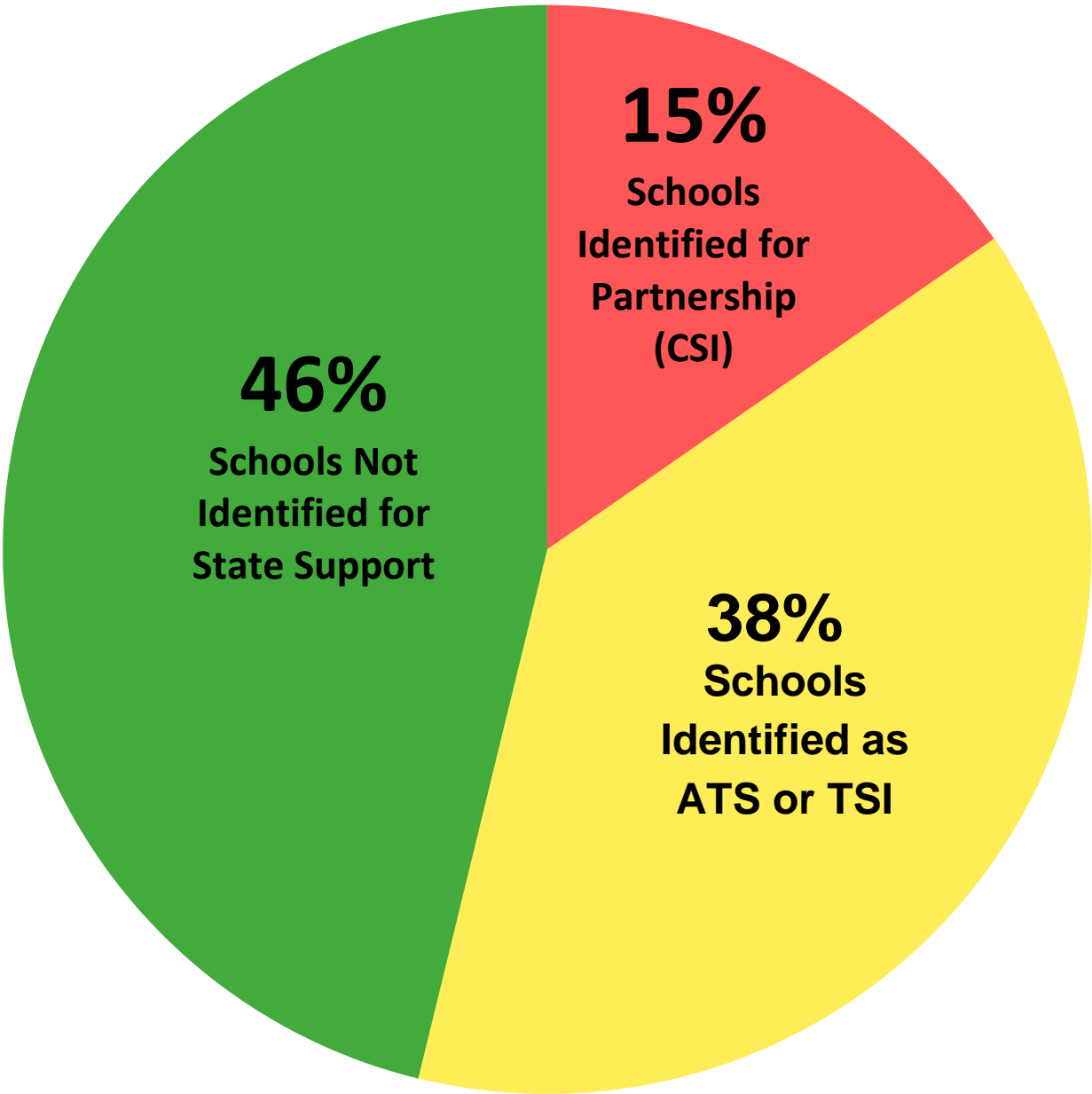


THERE ARE 138 SCHOOL DISTRICTS ON THE TSI LIST, OF THAT 10% ARE CHARTER SCHOOLS.



THERE ARE 68 SCHOOL DISTRICTS ON THE ATS LIST, OF THAT 28% ARE CHARTER SCHOOLS.

LSSU Portfolio Index Reporting



2023-2024 LSSU CSO Support Dashboard

District-Campus	MDE Support Category	Support Notes & Accomplishments
Bay City Academy- Bay City	General Support- No Specific State Required Plan	On Monday, September 18th Dan Quisenberry, President of the Michigan Association of Public school Academies (MAPSA) and Senator Kristen McDonald Rivet visited BCA to help celebrate Constitution Day and were treated to watching a BCA Drama Skit
Bay City Academy- North Central	General Support- No Specific State Required Plan	
Concord Academy Boyne	General Support- No Specific State Required Plan	
Concord Academy Petoskey	General Support- No Specific State Required Plan	Students at CAP enjoyed working with staff from The Dorothy Gerber Strings Program which has been offering exceptional string music education to youth in the Northern Michigan area for over 20 years.
DeTour Arts & Technology Academy	General Support- No Specific State Required Plan	
Grand Traverse Academy	General Support- No Specific State Required Plan	The Traverse City Record Eagle recently announced the "Simply the Best Awards" with GTA being selected as the "Best Elementary School" for the second year in a row, the "Best Workplace", and runner up for the "Best Teachers."
Innocademy Allegan	General Support- No Specific State Required Plan	
Innocademy Zeeland	General Support- No Specific State Required Plan	
Regent Park Academy	General Support- No Specific State Required Plan	
Ridge Park Academy	General Support- No Specific State Required Plan	Ridge Park Academy received two Eagle awards for parent engagement and satisfaction from National Heritage Academies.
Tipton Academy- Grades PreK-3	General Support- No Specific State Required Plan	
Way Academy- Chicago Campus	General Support- No Specific State Required Plan	

District-Campus	MDE Support Category	Support Explanation	Support Notes & Progress
ATA	Additional Targeted Support	Students w/ disabilities bottom 5%	It has completed an audit of its Special Education program and working to overhaul it completely. On track.
AIA- Upper Elementary	Additional Targeted Support	Black/African students bottom 5%	This area is being addressed in the partnership meetings. Progress is being made. On track.
DSLA- Main Campus	Additional Targeted Support	Students w/ disabilities bottom 5%	Changes being made as part of the partnership contract are projected to address this area of concern. On track.
Momentum	Additional Targeted Support	Black/African students bottom 5%	Still gathering information
Tipton- 4-8 grades	Additional Targeted Support	Students w/ disabilities bottom 5%	Has completed an audit of its Special Education program and is making changes in areas identified as needing improvement. On track.
Charlton Heston	Targeted Support & Improvement	Students with disabilities bottom 25%	CHA has tested 100% of the students with disabilities and have been in contact with the oversight person at MDE
DSLA- Redford Campus	Targeted Support & Improvement	Black/AA & Econ. Dis. Subgroups bottom 25%	Changes being made as part of the partnership contract are projected to address this area of concern. On track.
Icademy	Comprehensive Support & Improvement	Unimproved proficiency	Very high performer prior to Covid. No plan of development required by the state. On track.
WAY- Vernor Campus	Comprehensive Support & Improvement	Index bottom 5% and graduation rate	Alternative HS whose students' were off track for graduation. District is on track per the MDE.
WAY- Flint Campus	Comprehensive Support & Improvement	Graduation rate	Alternative HS whose students' were off track for graduation. District is on track per the MDE.
DSLA- Oak Park Campus	Comprehensive Support & Improvement	Index bottom 5%	New to partnership this year. On track.
Macomb Montessori	Comprehensive Support & Improvement	Index bottom 5%	Placed in partnership status prior to COVID and currently continuing. On track. Recognized by MDE for Multi-Tiered Systems of Behavior Support in Data Utilization & Implementation & Impact
AIA- Lower Elementary	Comprehensive Support & Improvement	Index bottom 5%	Placed in partnership status prior to COVID and currently continuing. On track.
AIA- MS/HS	Comprehensive Support & Improvement	Index bottom 5%	New to partnership this year. On track.



**Charter Schools Report
November 17, 2023**

Agenda Item #3: Innocademy Allegan Campus Reauthorization

Information

Action

Discussion

Purpose:

The purpose of this action is to approve the reauthorization of the Innocademy Allegan Campus charter contract.

Background:

The Board of Directors of the Innocademy Allegan Campus has requested the reauthorization of its charter contract. The Charter Schools Office staff has reviewed its application and has prepared a charter contract with an **effective date of July 1, 2024 thru June 30, 2029.**

Suggested Action/Motion:

The President recommends the reauthorization of the Innocademy Allegan Campus charter contract **effective July 1, 2024 thru June 30, 2029.**

President's Recommendation:

Approval of the reauthorization of the Innocademy Allegan Campus charter contract **effective July 1, 2024 thru June 30, 2029.**



Charter Schools Report
November 17, 2023

Agenda Item #4: Ascend Academy Authorization (See Appendix I)

Information

Action

Discussion

Purpose:

The purpose of this action is to approve the issuance of a charter contract to Ascend Academy to operate as a Public School Academy.

Background:

The Board of Directors of the Ascend Academy has requested the authorization of a charter contract. The Charter Schools Office staff has reviewed its application and has prepared a charter contract with an **effective date of July 1, 2024 thru June 30, 2029.**

Suggested Action/Motion:

The President recommends the authorization of the Ascend Academy charter contract **effective July 1, 2024 thru June 30, 2029.**

President's Recommendation:

Approval of the authorization of the Ascend Academy charter contract **effective July 1, 2024 thru June 30, 2029.**



Charter Schools Report
November 17, 2023

Agenda Item #5: Charter Schools Board Member Appointments

Information

Action

Discussion

Purpose:

The purpose of this action is to appoint or reappoint members of the Board of Directors of public school academies.

Background:

The process for appointment and reappointment of members of the Board of Directors of public school academies includes the following steps:

1. The applications of individuals for appointment to the Board of Directors are considered by the Board of Directors who nominate individuals by Board vote for open positions;
2. Background checks are conducted by the Charter Schools Office (CSO);
3. Interviews by CSO staff members are conducted with applicants for appointment; applicants for reappointment are not interviewed; and
4. Applicants are recommended to the Board of Trustees for appointment by the CSO and University President.

The following individuals have been nominated by the Board of Directors, background checks have been completed, and the candidates for appointment have been interviewed or will be interviewed before they are sworn in and U.S. citizenship has been verified.

Those individuals with an * received an approved exigent appointment from the LSSU Board of Trustees President.

Charlton Heston Academy:

Hollie Morse nominated for an appointment with a term expiring on June 30, 2026.

American International:

Carmen Rome nominated for an appointment with a term expiring on June 30, 2026.

Suggested Action/Motion:

The President recommends the appointment of the nominees to the respective Board of Directors for the terms listed.

President's Recommendation:

Approval of the appointment of the nominees to the respective Board of Directors for the terms listed.



Charter Schools Report
November 17, 2023

Appendix I: Charter Schools Office New Academy Application Flowchart and “Why Ascend”

Information

Action

Discussion

Purpose:

The purpose of this information is to provide the Board with the Charter Schools Office “New Academy Application Flowchart” and “Why Ascend” information.

Background:

N/A

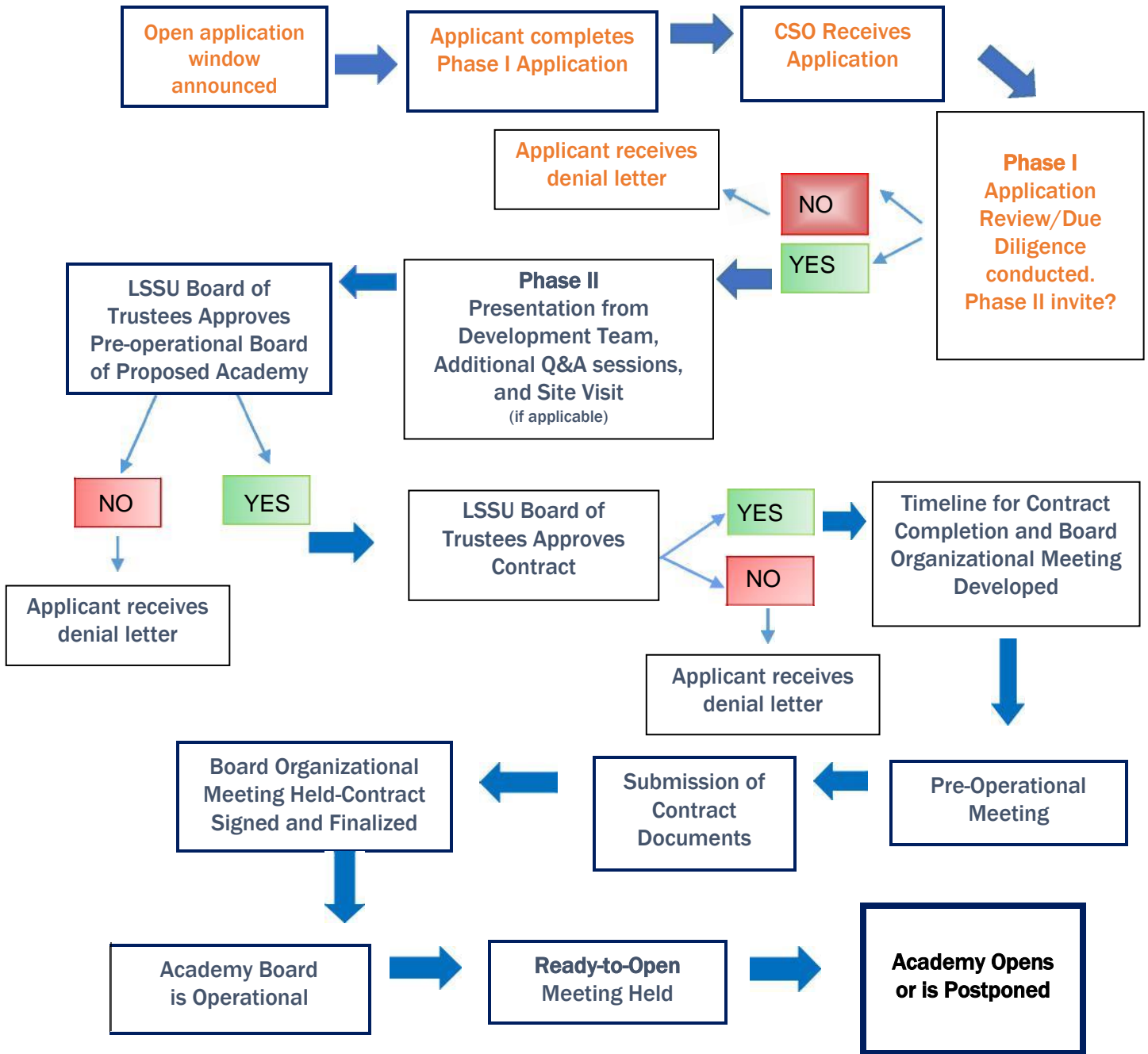
Suggested Action/Motion:

None

President’s Recommendation:

N/A

Application Process Flowchart



The LSSU CSO New Charter Application process takes between 27-30 months from initial application to academy opening.

April 2022

Why Ascend Academy?

- The LSSU Charter Schools application (outlined in the process flowchart) takes anywhere from 18-27 months to complete from initial application to an academy opening. Ascend started their journey with the LSSU CSO in April 2022 with an initial application, and then proceeded to phase II with a presentation and meeting on the LSSU campus. A pre-operational board was approved in May 2023 by the LSSU Board of Trustees and the next step is approval of a contract.
- Ascend Academy was thoroughly vetted by the LSSU CSO Application Review Team over the last 19 months and has met the criteria to be recommended for authorization. This means that the review team agreed that Ascend was a good candidate for being welcomed into the LSSU Portfolio by demonstrating:
 - a community need for the academy
 - a solid academic program that focuses on preparing students for a global mindset while meeting the social and emotional needs of students
 - fiscally sound
 - knowledgeable, professional, reputable management company/team
- Ascend Academy's beliefs align with the LSSU CSO philosophy as an authorizer because the LSSU CSO understands that a child's basic needs must be met before he/she/they can learn at an optimal level. We understand the impact that trauma (global pandemic, gun violence, racism, childhood neglect/abuse, poverty, etc.) has on academic performance. We have embraced a whole child philosophy and Ascend is like-minded. Ascend Academy will focus on building the EQ (Emotional Quotient) in order to develop the IQ (Intellectual Quotient).
- Ascend surveyed 225 respondents demonstrating the need for more choice, innovation, and change in Battle Creek
- No LSSU academies in that area (Battle Creek)
- Passionate, vested development team
- The Ascend board members have met monthly since their appointment in May. The board brings energy, excitement and hope to each meeting in anticipation of receiving a charter. The Ascend board consists of diverse professionals who are a part of the Battle Creek Community. The board participates in monthly professional development and four out of five members attended the LSSU mini board retreat in Zeeland, Michigan hosted by Airwin Education and the Innocademy Zeeland Board.
- Ascend Academy will be part of the innovative Global Mindset Schools Network supported by GPS Solutions. The academy will provide students with an expansive global lens of the world beyond Battle Creek.
- As part of its services and features, Ascend Academy aims to combine community, culture, and collaboration to make learning a truly authentic and impactful experience for their scholars.