



2023 Graduate Survey Report

The data in this report is a summary of data taken from the Spring, Summer, and Fall 2023 Graduate Surveys. It also includes general information about the number of degrees awarded and the level of degree. The survey is administered through the Class Climate system to graduates six months after graduation.

Degrees Awarded

There were **433 degrees** awarded in 2023 to **304 unique individuals**. The percentage of the degrees awarded at each level are given below.

Level	Number of Degrees	Percentage of Degrees
Certificate	9	2.1%
Associate	140	32.3%
Bachelor's	284	65.6%
	433	100.0%

Table 1: Number and Percentage of Degrees by Level

Many students earned multiple degrees or certificates. The following table breaks the data down by the number of degrees earned.

Number of Degrees Earned	Number of Graduates	Percentage of Graduates
One Degree	208	68.4%
Two Degrees	68	22.4%
Three Degrees	23	7.6%
Four Degrees	5	1.6%
	304	100.0%

Table 2: Number of Concurrent Degrees Earned by Graduates

The number of degrees are broken down by College and School in **Table 3**. For a list of programs by School, please see **Appendix A**. These data show that the College of Health and Emergency Responders awarded the most degrees and had the most individuals at the college-level. The School of Criminal Justice, Fire Science, and Emergency Services had this distinction at the school-level. *Note that some individuals earned degrees from two different Schools, so the numbers in the last column will not sum to 304. A majority of students earning multiple degrees, earned those degrees from the same School.

College	School	Degrees Awarded	Individuals by School*
College of Arts and Sciences	School of Arts, Letters, and Social Sciences	84	75
	School of Biological Sciences	18	15
	School of Chemistry, Environmental, and Geosciences	25	23
College of Business, Engineering, Computer Science, and Mathematics	Lukenda School of Business	52	47
	School of Computer Science and Mathematics	8	8
	School of Engineering and Technology	28	24
College of Great Lakes Ecology and Education	School of Education	30	28
	School of Natural Resources	31	29
College of Health and Emergency Responders	School of Criminal Justice, Fire Science, and Emergency Services	73	39
	School of Kinesiology and Psychology	46	37
	School of Nursing	38	38
		433	

Table 3: Number of Degrees and Individuals by School

Response Rate

The **overall response rate of those surveyed was 29.3%**, the lowest we've had in many years. One goal for improvement is to increase the response rate back to historical rates. Removing overlap from multiple degrees to avoid double-count individuals, the response rate can be broken down as follows in **Table 4**.

College	School	Individuals	Responses by Individual	Response Rate by Individual	
College of Arts and Sciences	School of Arts, Letters, and Social Sciences	27	4	14.8%	30.2%
	School of Biological Sciences	15	6	40.0%	
	School of Chemistry, Environmental, and Geosciences	21	9	42.9%	
College of Business, Engineering, Computer Science, and Mathematics	Lukenda School of Business	47	15	31.9%	24.1%
	School of Computer Science and Mathematics	8	2	25.0%	
	School of Engineering and Technology	24	2	8.3%	
College of Great Lakes Ecology and Education	School of Education	28	5	17.9%	32.1%
	School of Natural Resources	25	12	48.0%	
College of Health and Emergency Responders	School of Criminal Justice, Fire Science, and Emergency Services	34	8	23.5%	31.2%
	School of Kinesiology and Psychology	37	13	35.1%	
	School of Nursing	38	13	34.2%	
		304	89	29.3%	

Table 4: Individual Response Rate by School

If one instead bases the response rate on degrees conferred, the rates are as shown in **Table 5**.

College	School	Degrees	Survey Responses by Degree	Response Rate by Degree	
College of Arts and Sciences	School of Arts, Letters, and Social Sciences	84	26	31.0%	33.1%
	School of Biological Sciences	18	6	33.3%	
	School of Chemistry, Environmental, and Geosciences	25	10	40.0%	
College of Business, Engineering, Computer Science, and Mathematics	Lukenda School of Business	52	17	32.7%	23.9%
	School of Computer Science and Mathematics	8	2	25.0%	
	School of Engineering and Technology	28	2	7.1%	
College of Great Lakes Ecology and Education	School of Education	30	5	16.7%	32.8%
	School of Natural Resources	31	15	48.4%	
College of Health and Emergency Responders	School of Criminal Justice, Fire Science, and Emergency Services	73	18	24.7%	31.2%
	School of Kinesiology and Psychology	46	18	39.1%	
	School of Nursing	38	13	34.2%	
		433	132		30.5%

Table 5 Response Rate by Degrees Conferred

Employment

There are multiple questions on the survey about employment and employment in the field. The data in the next two tables also include some information about students continuing their education. Because students earning only an associate degree often continue and many of our programs have a high percentage of students seeking further study, it is valuable to view these numbers together. In a later section, those continuing their education will be broken down further to differentiate between those seeking further certification, associate degrees, bachelor’s degrees, professional degrees, or graduate degrees.

Table 6 provides information about the employment and educational status of graduates by individual. The rates are separated by school. In most cases, there is some overlap between graduates who are employed with those who are continuing their education, so the overall rate is also included.

College	School	Employment Rate	Continuing Their Education	Employed or Continuing Their Education
College of Arts and Sciences	School of Arts, Letters, and Social Sciences	91.7%	50.0%	95.8%
	School of Biological Sciences	83.3%	66.7%	100.0%
	School of Chemistry, Environmental, and Geosciences	88.9%	44.4%	88.9%
College of Business, Engineering, Computer Science, and Mathematics	Lukenda School of Business	80.0%	46.7%	100.0%
	School of Computer Science and Mathematics	100.0%	50.0%	100.0%
	School of Engineering and Technology	100.0%	0.0%	100.0%
College of Great Lakes Ecology and Education	School of Education	100.0%	0.0%	100.0%
	School of Natural Resources	100.0%	15.4%	100.0%
College of Health and Emergency Responders	School of Criminal Justice, Fire Science, and Emergency Services	90.9%	45.5%	100.0%
	School of Kinesiology and Psychology	84.6%	76.9%	100.0%
	School of Nursing	100.0%	30.8%	100.0%
		89.9%	41.6%	97.8%

Table 6: Rates of Employment and Continued Studies

Graduates were also asked if they were employed in a field related to their major. That information is included in **Table 7**, again seen through the lens of continuing studies. Examples of employers and job titles are provided in **Appendix B**.

College	School	Employed in Field	Continuing Their Education	Employed or Continuing Their Education
College of Arts and Sciences	School of Arts, Letters, and Social Sciences	66.7%	50.0%	91.7%
	School of Biological Sciences	83.3%	66.7%	100.0%
	School of Chemistry, Environmental, and Geosciences	77.8%	44.4%	88.9%
College of Business, Engineering, Computer Science, and Mathematics	Lukenda School of Business	60.0%	46.7%	93.3%
	School of Computer Science and Mathematics	100.0%	50.0%	100.0%
	School of Engineering and Technology	100.0%	0.0%	100.0%
College of Great Lakes Ecology and Education	School of Education	60.0%	0.0%	60.0%
	School of Natural Resources	84.6%	15.4%	92.3%
College of Health and Emergency Responders	School of Criminal Justice, Fire Science, and Emergency Services	90.9%	45.5%	100.0%
	School of Kinesiology and Psychology	76.9%	76.9%	92.3%
	School of Nursing	100.0%	30.8%	100.0%
		78.7%	41.6%	92.1%

Table 7: Employment in Field and Continuing Studies Rates

Graduates were also asked whether or not they were actively seeking employment. These rates are included in **Table 8**.

College	School	Actively Seeking Employment
College of Arts and Sciences	School of Arts, Letters, and Social Sciences	4.2%
	School of Biological Sciences	0.0%
	School of Chemistry, Environmental, and Geosciences	22.2%
College of Business, Engineering, Computer Science, and Mathematics	Lukenda School of Business	13.3%
	School of Computer Science and Mathematics	0.0%
	School of Engineering and Technology	0.0%
College of Great Lakes Ecology and Education	School of Education	0.0%
	School of Natural Resources	7.7%
College of Health and Emergency Responders	School of Criminal Justice, Fire Science, and Emergency Services	9.1%
	School of Kinesiology and Psychology	0.0%
	School of Nursing	7.7%
		9.0%

Table 8: Graduates Actively Seeking Employment

Graduates were asked whether or not they were employed in the state of Michigan. The rates in **Table 9** represent graduates employed in Michigan as a percentage of graduates who are employed (and not as overall rates which include those who are not employed).

College	School	Employed in Michigan
College of Arts and Sciences	School of Arts, Letters, and Social Sciences	81.8%
	School of Biological Sciences	80.0%
	School of Chemistry, Environmental, and Geosciences	57.1%
College of Business, Engineering, Computer Science, and Mathematics	Lukenda School of Business	53.8%
	School of Computer Science and Mathematics	50.0%
	School of Engineering and Technology	100.0%
College of Great Lakes Ecology and Education	School of Education	80.0%
	School of Natural Resources	61.5%
College of Health and Emergency Responders	School of Criminal Justice, Fire Science, and Emergency Services	90.9%
	School of Kinesiology and Psychology	81.8%
	School of Nursing	84.6%
		71.6%

Table 9: Employed in Michigan

Graduates were asked for their starting salary. The data below in **Table 10** is based upon those graduates who said that they were employed in a field related to their major and who provided salary data. The data excludes graduate teaching and research assistantship salaries.

College	School	Average	Median
College of Arts and Sciences	School of Arts, Letters, and Social Sciences	\$53,501	\$50,220
	School of Biological Sciences	\$30,000	\$32,500
	School of Chemistry, Environmental, and Geosciences	\$40,267	\$38,000
College of Business, Engineering, Computer Science, and Mathematics	Lukenda School of Business	\$60,849	\$54,000
	School of Computer Science and Mathematics	\$43,350	\$43,350
	School of Engineering and Technology	\$76,000	\$76,000
College of Great Lakes Ecology and Education	School of Education	\$41,667	\$41,000
	School of Natural Resources	\$33,130	\$35,000
College of Health and Emergency Responders	School of Criminal Justice, Fire Science, and Emergency Services	\$41,016	\$44,000
	School of Kinesiology and Psychology	\$37,450	\$33,000
	School of Nursing	\$66,945	\$68,016
		\$48,216	\$44,000

Table 10: Average and Median Salaries in Field

In **Figure 11**, boxplots show the spread of the salary data.

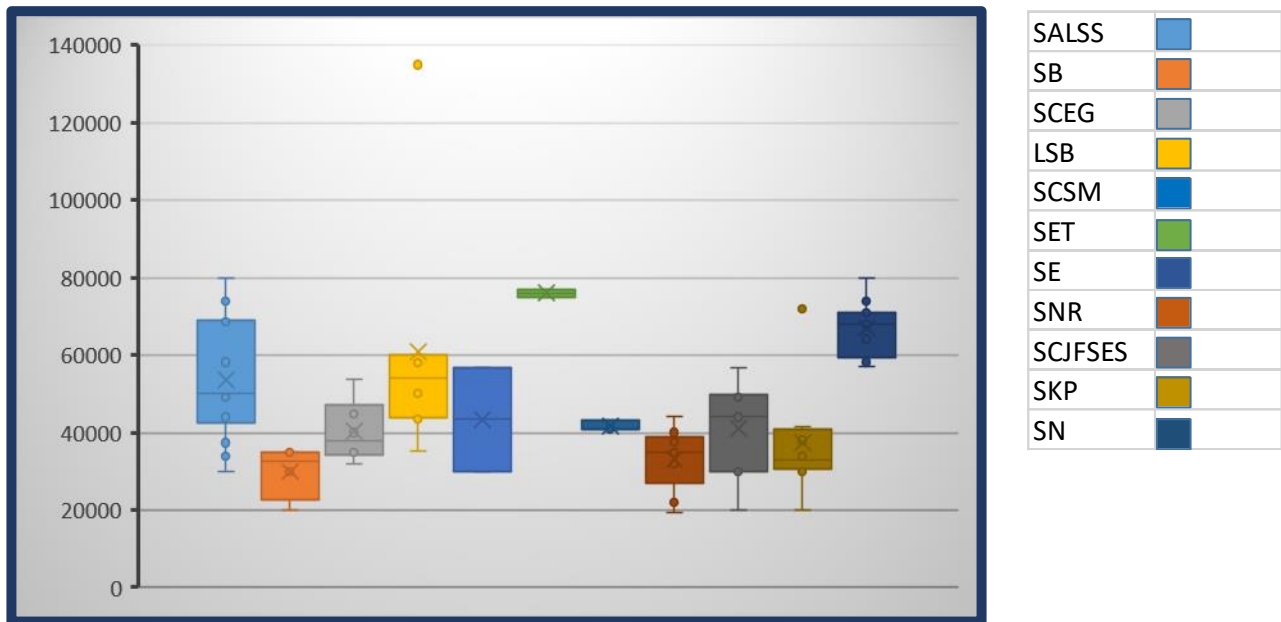


Figure 11: Spread of Salary Data

Continued Studies

The breakdown of the percentage of graduates who are continuing their studies is included in **Table 12**. A list of example graduate and professional schools is located in **Appendix C**.

School	Certificate	Associate	Bachelor	Master	Doctorate	Professional	Non-Degree	Total
School of Arts, Letters, and Social Sciences	4.2%		4.2%	33.3%	8.3%			50.0%
School of Biological Sciences			16.7%	33.3%	16.7%			66.7%
School of Chemistry, Environmental, and Geosciences			11.1%	22.2%	11.1%			44.4%
Lukenda School of Business	6.7%	6.7%	6.7%	20.0%		6.7%		46.7%
School of Computer Science and Mathematics	50.0%							50.0%
School of Engineering and Technology								0.0%
School of Education								0.0%
School of Natural Resources		7.7%		7.7%				15.4%
School of Criminal Justice, Fire Science, and Emergency Services	18.2%		9.1%	9.1%	9.1%			45.5%
School of Kinesiology and Psychology				61.5%	15.4%			76.9%
School of Nursing				30.8%				30.8%
								41.6%

Table 12: Percentage of Graduates Continuing Studies by Level

Preparedness

Graduates were asked to rate themselves on a scale from one to five in the area of preparedness. These data are shown in **Figure 13**. The question asked, “**How well do you feel your LSSU degree prepared you for your work?**” A one on the scale reflected “not well prepared” and a five reflected “well prepared”. The figure contains data by School and the overall summary.

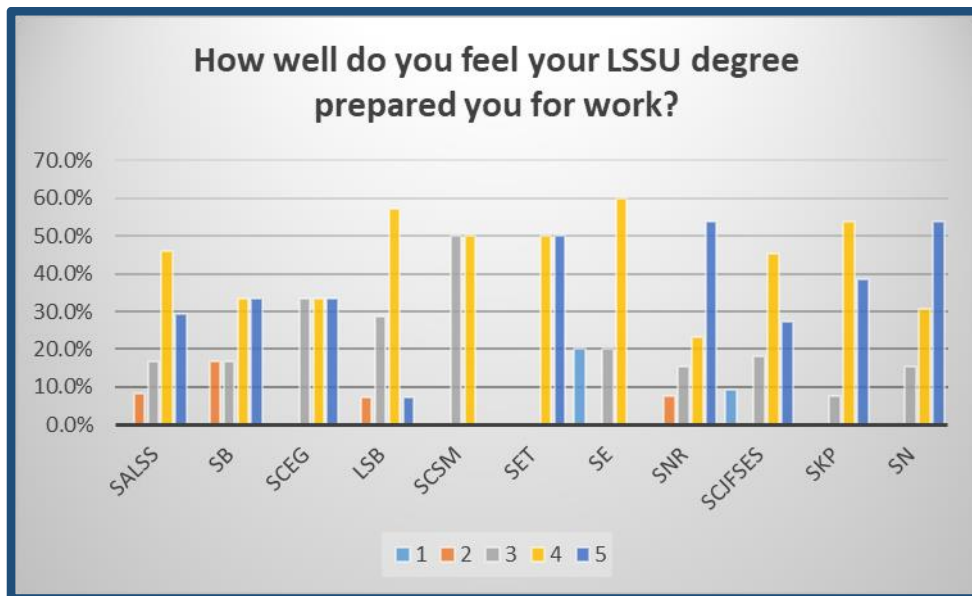


Figure 13: Preparation—Percentage of Graduates by Category

Appendix A: Programs by College and School

College of Arts and Sciences

School of Arts, Letters, and Social Sciences

English Lang Lit Sec Teach-BA	4
General Studies-A	50
General Studies-BA	1
General Studies-BS	1
Generals Studies-BS	1
Liberal Arts-AA	9
Political Science-BA	1
Political Science-BS	1
Social Science	1
Social Science-BS	3
Social Work	8
Substance Abuse Prev/Trtmt	4

School of Biological Sciences

Biology	5
Biology Pre-Med	5
Biology Pre-Vet	3
Biology-BS	2
Pre-Professional Sciences	3

School of Chemistry, Environmental, and Geosciences

Biochemistry	1
Cannabis Chemistry-BS	6
Cannabis Production-C	2
Chemistry-A	1
Clinical Laboratory Science-BS	3
Environmental Science-BS	3
Forensic Chemistry-BS	3
Geology-BS	2
Integrated Sci Sec Te-5yr-BS (PE)	1
Integrated Science	2
Integrated Science Sec Te-BS	1

College of Business, Engineering, Computer Science, and Mathematics

Lukenda School of Business

Business Administration-A	1
Business Administration-BS	9
Business Adm-Intl Business-BS	3
Business Adm-Management-BS	11
Business Adm-Marketing-BS	7
Cannabis Business-BS	2
E-Marketing-C	4
Finance and Economics-BS	7
Technical Accounting	3

School of Computer Science and Mathematics

Computer Networking-BS	5
Computer Science-BS	1
Mathematics-BS	2

School of Engineering and Technology

Computer Engineering-BS	3
Electrical Engineering-BS	4
Manufacturing Eng Tech-A	1
Manufacturing Eng Tech-BS	2
Mechanical Engineering-BS	10
Mechatronics	1
Robotics Engineering-BS	7

College of Great Lakes Ecology and Education

School of Education

Early Childhood Education-A	3
Early Childhood Education-BS	5
Elementary Ed-Special Ed-BS	5
Elementary Education-BS	15
English Lang Lit Elem Ed-BA	2

School of Natural Resources

Conservation Biology-BS	5
Fisheries Wildlife Management-	18
Geographic Information Systems-C	3
Geospatial Technology	1
Natural Resources Technology-A	4

College of Health and Emergency Responders

School of Criminal Justice, Fire Science, and Emergency Services

Crim Jus Homeland Security-BS	9
Criminal Justice Correction-A	3
Criminal Justice Law Enforce-A	17
Criminal Justice-BS	23
Fire Science Generalist Cert-B	9
Fire Science-A	7
Paramedic Technology AS	5

School of Kinesiology and Psychology

Health Fitness Specialist-A	10
Kinesiology-BS	15
Psychology-BS	21

School of Nursing

Nursing-BS	38
------------	----

Appendix B: Example Employers and Job Titles

College of Arts and Sciences

School of Arts, Letters, and Social Sciences

Employers*

Alberta Health Services
Branch Hillsdale St Joseph Community Health Agency
Cadillac Munson Hospital
Chippewa County Health Department
Fifth Third Bank
John's Hopkins Hospital
Lake Superior State University
McLaren Central Michigan
Michigan Department of Health and Human Services
MyMichigan Medical Center Sault
Ottawa County Sheriff's Office
Trinity Health
Women's Resource Center of Northern Michigan's Children's Advocacy Center

Job Titles*

Administrative Assistant
AP Sales Tax Specialist
Corrections Deputy
Critical Care Nurse
Emergency Room Nurse
Environmental Health Sanitarian
Family Advocate
Foster Care Specialist
Health Educator
Registered Nurse
RNI on Adult Transplant

*Lists include a majority of individuals with multiple majors from multiple colleges

School of Biological Sciences

Employers

Carmeuse Lime and Stone
Huron Pines
MyMichigan Medical Center Sault
Riverbanks Zoo and Garden

Job Titles

Coastal Restoration Technician
Herpetology Keeper
Lab technician
Medical Laboratory Assistant

School of Chemistry, Environmental, and Geosciences

Employers

Labcorp
Lion Labs
Perrigo
Steadfast Labs

Job Titles

Field/Lab Technician
Quality Control Chemist
Specialty Laboratory Assistant (Histology)
Study Technician

College of Business, Engineering, Computer Science and Mathematics

Lukenda School of Business

Employer

Amazon Web Services
Fifth Third Bank
iBeAuthentic
Kanopy Homes
Kewadin Casino
RealTruck
State of Michigan
TJMaxx

Job Title

AP Sales Tax Specialist
AR Associate
Assistant Store Manager
Associate Account Executive
Auditor 9
Digital Communications Coordinator
Digital marketing coordinator
Operations Manager

School of Computer Science and Mathematics

Employers

Chippewa County
Statistical Institute of Jamaica

Job Titles

IT Specialist
Statistician

School of Engineering and Technology

Employers

JR Automation
KION Group

Job Titles

Controls Engineer
R&D Mechatronics Engineer

College of Great Lakes Ecology and Education

School of Education

Employers

Eaton Rapids Public Schools
Rudyard Area Schools

Job Titles

Kindergarten Teacher
Resource Room Teacher

School of Natural Resources

Employers

Huron Pines
Little Traverse Bay Band of Odawa Indians
National Park Service at Sleeping Bear Dunes
U.S Fish and Wildlife Service and American Conservation Experience
United States Fish and Wildlife Service
Wisconsin Department of Natural Resources

Job Titles

Environmental Health Sanitarian
Fisheries Biological Support Member
Fisheries Technician
Research Technician
Wildlife Control and Biology
Wildlife Technician

College of Health and Emergency Responders

School of Criminal Justice, Fire Science, and Emergency Services

Employers

71B District Court
Chippewa County
Chippewa County Health Department
Gladstone Area Schools
Hungerford Nature Center and New Britain Youth Museum
Huron Pines
Michigan Department of Health and Human Services
Michigan Department of Natural Resources
National Park Service at Sleeping Bear Dunes
Oakland County Sheriff's Office
Ottawa County Sheriff's Office

Job Titles

At-Risk Coordinator / Behavior Interventionist
Biological Science Technician
Coastal Restoration Technician
Conservation Officer
Corrections Deputy
Deputy 1
Educator and Programs Associate
Foster Care Specialist
Health Educator
IT specialist
Park Ranger E8
Probation Officer

School of Kinesiology and Psychology

Employers

Attendent Care Autism Services
Chippewa County Health Department
Gateway Foundation, Inc.
Lawrence Autism Center
MyMichigan Medical Center Sault
University of Michigan
Wellspring Lutheran Service
Women's Resource Center of Northern Michigan's Children's Advocacy Center

Job Titles

Exercise Physiologist
Family Advocate
Family Preservation Worker
Health Educator
Outpatient Technician
Program Director
Registered Behavior Technician
Rehabilitation Tech

School of Nursing

Employers

Alberta Health Services
Bronson Behavioral Health
Cadillac Munson Healthcare
Cadillac Munson Hospital
Corewell Health
John's Hopkins Hospital
McLaren Central Michigan
Munson Medical Center-Traverse City
MyMichigan Medical Center Sault
Trinity Health

Job Titles

Critical Care Nurse
Emergency Room Nurse
Registered Nurse
Registered Nurse Behavioral Medicine
RNI on Adult Transplant

Appendix C: Example Graduate of Professional Schools Reported

College of Arts and Sciences

School of Arts, Letters, and Social Sciences

Grand Valley State University
Northern Michigan University
The University of Southern Mississippi
University of Calgary
University of Phoenix

School of Biological Sciences

Miami University
Michigan State University College of Veterinary Medicine
University of Toledo

School of Chemistry, Environmental, and Geosciences

University of Minnesota
University of Texas at El Paso

College of Business, Engineering, Computer Science and Mathematics

Lukenda School of Business

Aurora University
University of Dayton
University of Phoenix

College of Great Lakes Ecology and Education

School of Natural Resources

Oregon State University

College of Health and Emergency Responders

School of Criminal Justice, Fire Science, and Emergency Services

University of Michigan

School of Kinesiology and Psychology

Florida Institute of Technology

Grand Valley State University

Michigan State University

Northern Michigan University

The Chicago School of Professional Psychology

University of Minnesota

University of Wisconsin-Stevens Point

School of Nursing

Central Michigan University

University of Calgary