

Academic Affairs Update March 15, 2026

College of Arts and Sciences

Student Accomplishments and Activities

- On February 14, the Michigan Tech Husky Pep Band traveled to Taffy Abel Arena to perform alongside the Lake Superior Soundwave Pep Band during the rivalry hockey matchup between Michigan Technological University and Lake Superior State University. Opposing pep bands typically appear together only during postseason tournaments, making the regular-season collaboration a unique experience for fans. The Lake Superior Soundwave Pep Band included 45 members, while Michigan Tech brought approximately 50 musicians to the game.
- On Saturday, February 14, the Lake Superior Soundwave Pep Band hosted its annual Band Day, a day where high schoolers are invited to come and perform with the band at a NCAA Division I hockey game. Last year, there were 12 students that attended. This year, there were 30 students from seven high schools in attendance. Students from Bark River-Harris High School, Manistique High School, Engadine High School, Brimley High School, Sault Area High School, St. Ignace LaSalle High School and Pellston High School joined LSSU's Pep Band for a night of wonderful music making.
- On February 19 and 20, schools from across the EUP converged at LSSU's Arts Center for their annual concert band adjudication performance, the Michigan School Band and Orchestra Association District 13 Band and Orchestra Festival. Sault Area Schools, Brimley Area Schools, Rudyard Area Schools, Pickford Area Schools, Les Cheneaux Community Schools, St. Ignace Area Schools, Engadine Consolidated School, and Newberry Schools brought their junior high and high school bands to perform and get adjudicated. There were approximately 300 students in grades 7-12 performing in the Arts Center.
- Julia Grenn, Ph.D. (LSSU Biology 2020) was recently elected as incoming Vice-President of the US Aquaculture Society (USAS). She was also recognized for her role as an aquaculture mentor in a recent [article](#) in Aquaculture North America.
- The LSSU Aquaculture Club attended the Aquaculture America meeting in Las Vegas, Nevada from February 16–20 and presented the club's activities during the student showcase special session. Pictured left to right are: Virginia Moore (Environmental Science senior); Maggie Lawrence (Biology: Food & Ecology 2024);



The pep bands from LSSU and MTU pack Taffy Abel Arena with energy, rivals on the ice, but united in sound as they collaborate to bring full volume spirit to the Sault.



LSSU Aquaculture has a seat at the table with the US Aquaculture Society

Julia Grenn (Biology 2020); Paxton Spencer (Fisheries and Wildlife Management 2022); and Anissa Overly (Forensic Chemistry senior).

Publications and Creative Works

- Assistant Professor Noah Lucé received outstanding critical recognition for his recent professional work as fight choreographer for *Romeo and Juliet* at 6th Street Playhouse in Santa Rosa, California. In their review for North Bay Stage and Screen, Beulah F. Vega noted that “fight coordinator Noah Lucé had his work cut out for him, bringing the intense fights to a size that was safe enough for the very intimate space. That he did so is a testament to his talent.” Similarly, Press Democrat critic Jenny Hollingsworth praised the production’s “exciting sword fights choreographed by Noah Lucé,” adding that even audiences hesitant about Shakespeare would find the production both accessible and thoroughly entertaining, “Plus, who doesn’t love a good sword fight?” These reviews highlight Professor Lucé’s growing reputation for dynamic, artistically driven, and safety-focused fight choreography in professional theatre.



Steel meets steel as two rivals square off in a tense stage duel, every movement charged with defiance and drama.

- Professor Adam St. John wrote a 10-part series on film director Michael Mann for InSession Film entitled "[The 10 ComMANNdments – The Filmmaking Styles, Tenets, and Traits of Michael Mann.](#)"

Recruitment and Outreach

- LSSU geology professor Paul Kelso visited Northwestern Michigan College (NMC) in Traverse City on February 11 and met with four earth science classes. Dr. Kelso spoke with students and faculty about LSSU, geology, and STEM careers. Geologic samples were shared and discussed, along with LSSU student projects and careers with around 50 NMC students.
- LSSU geology professor Paul Kelso visited Grand Traverse Academy (GTA), an LSSU charter school in Traverse City, on February 12. Dr. Kelso met with high school physics and chemistry classes conducting physics and geology activities and discussed LSSU and potential STEM careers with over 60 GTA students. Students were very engaged while examining fluorescent sodalite (Yooperlite) with specialized UV flashlights.

Scholarship Activity

- As a respondent for the American College Theatre Festival, Professor Adam St. John visited Northern Michigan University and gave feedback to a production of "A Streetcar Named Desire."
- Professor Adam St. John directed the world premiere production of "The Meeting," written by LSSU alum Mariana Bezerra, in the Arts Center Black Box Theatre from February 11–14.

Other Activities

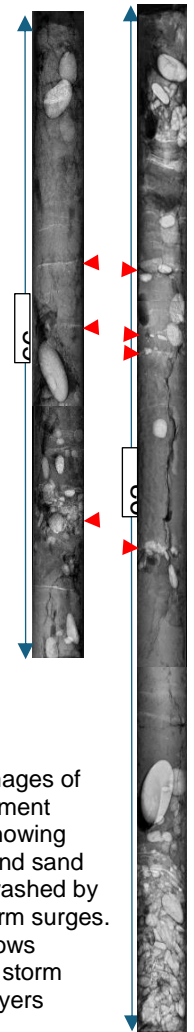
- LSSU geology alumnus Julia Astromovich visited LSSU on February 4. Julia met with students in geology seminar and led a class activity using data she brought from industry. LSSU geology students interpreted well log data and used this data to correlate the geology across the region and interpret changes in the environment of deposition of the sediments. Julia also spoke with students at the LSSU Geology Club meeting about graduate school, which she attended at the University of Texas - El Paso, and about her work for small and large companies in the energy industry, primarily in the Dallas / Fort Worth Texas region.
- Dr. Nalaka Ranasinghe, Dr. Paul Kelso, Dr. Hari Kandel, Ella Mosses, Logan McQueen, and Avery Walters discovered evidence of past storms in Lake Superior through their study, initiated to reconstruct the storm history of the lake.



LSSU geology alumnus Julia Astromovich speaks with geology students about graduate school.

The main objective of the project is to understand the relationship between past climate changes and storm frequency, which will help predict future scenarios amid ongoing climate changes. Reconstructing thousands of years of storm history is possible by studying sand layers deposited in coastal wetlands by storm surges. Understanding changes in the frequency and intensity of storms and storm surges is important for coastal and environmental management around the Great Lakes, for mitigating hazards, and for planning human activities. Initial Ground Penetrating Radar (GPR) surveys and coring have revealed that many sand and gravel layers, laden by past storm surges, are preserved in swales in the Vermilion Point Nature Preserve on the Lake Superior shoreline. Dr. Ranasinghe and the team plan to expand the project to multiple locations and to develop a robust storm history for the region by obtaining ages of the events.

Preliminary studies of the project were funded in part by the David M. Knowles Glacial Lake Study gift.



X-ray images of the sediment cores showing gravel and sand layers washed by past storm surges. Red arrows indicate storm surge layers



Ground penetration radar survey by LSSU students



Sediment coring by the team

College of Business, Engineering, Computer Science, and Mathematics

Student Accomplishments and Activities

- A team of seven LSSU engineering students participated in RoboBoat 2026, held February 19-24 in Sarasota, FL. They competed against 36 teams from 10 countries. The LSSU team placed 16th in the Design Documentation category and received the Team Engagement Award.



Scholarship Activity

- The School of Engineering and Technology recently received support from Applied Manufacturing Technologies (AMT), which sponsored an engineering classroom on campus. The sponsorship reflects AMT's long-standing partnership with LSSU and its commitment to strengthening the pipeline of future automation and robotics engineers. Through collaborations like this, students gain stronger connections to industry while preparing for careers in advanced manufacturing and automation. More information was published in the company's [blog](#).



College of Great Lakes Ecology and Education

Student Accomplishments and Activities

- Twenty-two students attended the 2026 joint annual conference of the Michigan Chapter of the American Fisheries Society and The Wildlife Society in Flint, MI this February. Carli Huhn and Alana Schofield gave oral presentations on their research, and Aiden Cardwell, Brendan Conger, McKinsley McCardell, Sam Rimatzki, Bree McFarlane, Tony Savoie, Lauren Schagel, Eli Herriman, Kennedy Konkle, Gerald Trinklein, and Sarah Gremmar all presented poster presentations. Students also had an opportunity to network with professionals all week, including a large number of alumni (see photo below).



At the Joint Annual Conference of the Michigan American Fisheries Society and The Wildlife Society, LSSU was well-represented by current students, faculty and staff, as well as an impressive group of alumni.

- Sarah Gremmer (Fisheries & Wildlife), Anna Matichuk (Conservation Biology), and Gerald Trinklein (Fisheries & Wildlife) were all awarded travel awards to attend the conference, and LSSU's Fisheries and Wildlife Club ran a raffle which raised \$2,000 for student chapters across the state.
- Max Verody (Parks and Recreation major), Ryan Quackenbush, Blake Patterson, and Aiden Cardwell (Fisheries & Wildlife Management majors), and Anna Matichuk (Conservation Biology major) worked closely with Dean Moerke, Dr. Mackey, Brigitte Ledford (Student Life), and Justin Fountain (Norris Center) and were awarded \$12,000 from Student Government to revive the Regional Outdoor Center. This initial investment will pay for new equipment where students can rent outdoor gear (e.g., snowshoes, skis, ice fishing gear) for no cost.
- Colee Cheney accepted a Special Education position at Big Rapids Middle School.
- Gabriella Smith accepted a teaching position at Lakeview Elementary School.

Publications

- Arsenault, A. J., Pearce, N. J. T., Ozersky, T., D'Amario, S. C., Shchapov, K., Carrick, H. J., Chaffin, J.D., Coleman, M. L., Currie, W. J. S., Doubek, J. P., Eveleth, R., Godwin, C. M., McKay, R. M., Rennie, M. D., Twiss, M. R., Uzarski, D., Vanderploeg, H. A., Vick-Majors, T., Zastepa, A., Xenopoulos, M. A. (2026). Dissolved organic matter composition in the Laurentian Great Lakes ice and its contribution to spring melt. *Journal of Geophysical Research: Biogeosciences*, 131, e2025JG009367. <https://doi.org/10.1029/2025JG009367>

Conference Presentations

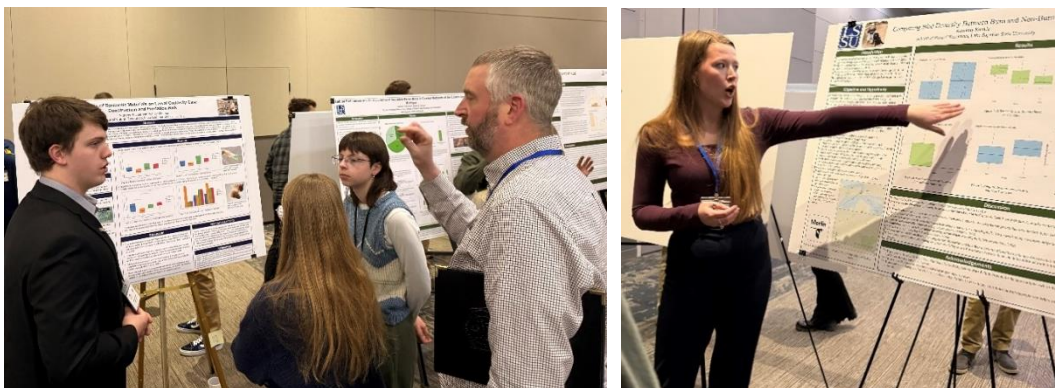
- Arnold, C., Kapuscinski, K. L., Dunn, S. J., Heckman, Leitz, C.M., and A.H. Moerke. Ecological Effects of Compensating Gate Operations on Fishes and Benthic Invertebrates in the St. Marys River Main Rapids. Michigan Chapter of the American Fisheries Society and The Wildlife Society 2026 Joint Annual Meeting. Flint, MI.

- Brewer, D. E., Webb, E. B., Mini A. E., McKnight, S.K. Creating and field-testing Bayesian Networks meant to predict habitat of a data deficient and secretive marsh bird. Michigan Chapter of the American Fisheries Society and The Wildlife Society 2026 Joint Annual Meeting. Flint, MI.
- Dunn, S., Kapuscinski, K. L., and A.H. Moerke. Changes in macroinvertebrate assemblages of the Little Rapids in response to habitat restoration and invasion by *Didymosphenia geminata*. Michigan Chapter of the American Fisheries Society and The Wildlife Society 2026 Joint Annual Meeting. Flint, MI.
- Eurich, H., Kapuscinski, K. L. Population characteristics of wild and hatchery-reared adult Steelhead in the Carp River. Michigan Chapter of the American Fisheries Society and The Wildlife Society 2026 Joint Annual Meeting. Flint, MI.
- Gremmer, S., Kapuscinski, K. L., Binder, T., Freeman, S. D. D., Smith, J. B. Evaluating habitat use, survival, and movement patterns of hatchery-reared, age-1 Atlantic Salmon *Salmo salar* stocked in the restored Little Rapids, St. Marys River. Michigan Chapter of the American Fisheries Society and The Wildlife Society 2026 Joint Annual Meeting. Flint, MI.
- Heckman, D., Verhamme E., Cuttrel, G., Purcell, H., Gordon, Z., Kandel, H., Moerke, A.H. An early detection network for oil spills in the Great Lakes using real-time in-situ hydrocarbon sensors. Michigan Chapter of the American Fisheries Society and The Wildlife Society 2026 Joint Annual Meeting. Flint, MI.
- Huhn, C.K., Petroelje, T.R., Norton, D.C., Parker, J.M. Black bear (*Ursus americanus*) movement in relation to all-terrain and off-road vehicle use on Drummond Island, Michigan. Michigan Chapter of the American Fisheries Society and The Wildlife Society 2026 Joint Annual Meeting. Flint, MI.
- McFarlane, B.L., Parker, J.M. White-tailed deer detection across various habitat types according to seasonality and predator presence. Michigan Chapter of the American Fisheries Society and The Wildlife Society 2026 Joint Annual Meeting. Flint, MI.
- Miller-Schofield, A. J., Kapuscinski, K. L., Ranson-Olson, B. D., Fischer, J., Burke, M., McKenna, J. Sex-specific Population Characteristics of Lake Sturgeon in the St. Marys River during 2023-2025. Michigan Chapter of the American Fisheries Society and The Wildlife Society 2026 Joint Annual Meeting. Flint, MI.
- Rimatzki, S., Brewer, D. E. Habitat preferences and co-occurrence of secretive marsh birds in coastal wetlands of the eastern Upper Peninsula, Michigan. Michigan Chapter of the American Fisheries Society and The Wildlife Society 2026 Joint Annual Meeting. Flint, MI.
- Herriman, E., Conger, B., Doubek, J. Effects of water color on zooplankton communities and larval coregonine length and abundance. Michigan Chapter of the American Fisheries Society and The Wildlife Society 2026 Joint Annual Meeting. Flint, MI.
- Conger, B., Herriman, E., Doubek, J. Feeding selectivity of larval coregonines in comparison to zooplankton density in Northern Lake Huron. Michigan Chapter of the American Fisheries Society and The Wildlife Society 2026 Joint Annual Meeting. Flint, MI.

- Cardwell, A., Doubek, J. Impacts of environmental factors on zooplankton communities across sinkhole lakes in Michigan's Northern Lower Peninsula. Michigan Chapter of the American Fisheries Society and The Wildlife Society 2026 Joint Annual Meeting. Flint, MI.
- Schagel, L., Witt, J. Investigating patterns of petal color change in Great White Trilliums (*Trillium grandiflorum*) in Vanderbilt, MI. Michigan Chapter of the American Fisheries Society and The Wildlife Society 2026 Joint Annual Meeting. Flint, MI.
- Savoie, A., and Moerke, A. The effects of synthetic materials on larval caddisfly case construction and predation risk. Michigan Chapter of the American Fisheries Society and The Wildlife Society 2026 Joint Annual Meeting. Flint, MI.
- Weld, N., Witt, J., Susic, J. Evaluating the Presence, Distribution, and Habitat Preferences of Marten (*Martes americana*) and Fisher (*Pekania pennanti*) in Michigan's northern Lower Peninsula. Michigan Chapter of the American Fisheries Society and The Wildlife Society 2026 Joint Annual Meeting. Flint, MI.
- Trinklein, G. and A. Moerke. Ecological Constraints on Zebra Mussels in the St. Marys River. Michigan Chapter of the American Fisheries Society and The Wildlife Society 2026 Joint Annual Meeting. Flint, MI.

Honors and Awards

- Jamie Curtis, adjunct in the School of Education, was awarded the Rudyard Area Schools Teacher of the Year. Jamie was recognized by her peers for her commitment to students and their learning.
- LSSU students swept the student poster awards at the Michigan Chapter of the American Fisheries Society and The Wildlife Society 2026 Joint Annual Meeting in Flint, MI. Kennedy Konkle (Fisheries & Wildlife Management student) was awarded the Best Student Poster Presentation by the Michigan Chapter of the Wildlife Society and Anthony Savoie (Fisheries & Wildlife Management student) was awarded the Best Student Poster Presentation by the Michigan Chapter of the American Fisheries Society. Both Kennedy and Anthony were competing against dozens of undergraduate and graduate students from universities across the state. Congratulations to Anthony and Kennedy! LSSU has won the award 8 out of the last 10 years for Fisheries, and now back-to-back years for Wildlife.



LSSU Sweeps the Best Student Poster Presentation Awards at the 2026 Joint Annual Conference of the Michigan American Fisheries Society (left, Anthony Savoie) and The Wildlife Society (right, Kennedy Konkle).

Academic Program Successes

- Congratulations to Kennedi Johnson and Anna Matichuk, the most recent additions to the Master of Science in Fisheries and Wildlife program.

Recruitment and Outreach

- Barch CFRE and the Hatchery hosted 9 prospective student tours with family members. Students were exploring a variety of majors including Creative Writing, Nursing, Fisheries and Wildlife, and Conservation Biology.
- Dr. Toni Stith hosted a table at the annual Michigan Education Association (MEA) meeting where she promoted LSSU and our partnership with VESi. LSSU is promoting continuing education and advancement for Michigan teachers through an online learning program, VESi (Virtual Education Software). When teachers and administrators complete VESi courses, they earn continuing education graduate credit from LSSU.
- On February 2, twenty-four LSSU students participated in an Ambassador outreach event—Gyotaku—a Japanese art form where fish (in this case rubber fish) are used to create art on t-shirts, rice paper, and in one instance, Carhart overalls.
- On February 5, the EUP elementary and secondary principals held their monthly meeting at Barch CFRE. Education & Outreach staff led tours for both groups, showcasing the opportunities available to CTE students as well as activities for field trip programs or school visits.
- On February 9, Dr. Jennifer Fager and Mary-Lynne Lukenda met with representatives at Sault College to develop a new pathway for Sault College students to earn their teaching degrees at LSSU.
- On February 11, Dr. Toni Stith led a Lunch and Learn event entitled, “Engaging students in the Synchronous Classroom.” The event was attended by 10 faculty and staff members from LSSU.
- Michelle Visser attended Rudyard High School’s CTE week on the mornings of February 2–5, and showcased the Natural Resources program to sophomore students interested in CTE from Sault Area High School, Malcolm High School, Pickford High School, Les Cheneaux Community Schools, Rudyard High School, Brimley Area Schools, and Ojibwe Charter School.
- During the week of February 2–5, this year’s CTE students had the opportunity to explore multiple careers through activities that included a zooplankton workshop run by Dr. Jon Doubek, a presentation from a former Isle Royale research technician, an oil spill response presentation from GLCOE’s Joe Torcivia, and activity materials created by Beth Christiansen.
- On January 29, Education & Outreach staff and student assistants Blake Patterson (Fisheries & Wildlife) and Delaney Smith (Outdoor Rec & Leadership) visited two Rudyard 7th grade classes and taught 55 students about lake sturgeon characteristics, ecology and conservation.
- Twenty 8th grade JKL Bahweting students explored natural resource careers during a two day program this month. Education & Outreach team members Beth Christiansen and Michelle Visser visited the careers class at JKL Bahweting on February 6, introducing students to macroinvertebrate ID and watershed engineering. The following week, February 10, twenty students visited CFRE’s Great Lake Discovery Center (GLDC) to see their watershed design in

action at our watershed table and test their macroinvertebrate identification skills to determine water quality. They also explored humanity's relationship with, and impact on, lake sturgeon. Sophomore Taylor Allen (Fisheries & Wildlife) assisted with this program.

- Twenty preschool children from Chippewa Luce Mackinac County Action Agency (CLMCAA) visited CFRE on February 6 to learn about Great Lakes fishes, especially lake sturgeon, through crafts and activities. Sophomores, Taylor Allen and Delaney Smith, assisted with this program.
- Eight preschool children with 5 mothers from MomCo organization visited the GLDC for a "playdate" with the book *Over and Under the Snow* including touch bear and beaver pelts, a track mat to simulate walking like animals, and a craft. Children also interacted with the live animals in the GLDC. Taylor Allen and Anna Figert (School of Education) supported the program.

Publicity

- Articles highlighting the recent Barch gift to CFRE for \$3 million was covered locally—*LSSU receives \$3 million to boost Great Lakes research*, [Soo Leader 2-12-2026](#), [UpWord 2-17-2026](#), and [9&10 News 2-12-2026](#), and [The Sault News 2-16-2026](#).
- *Research centers in the Great Lakes region change the scope of global freshwater ecology*, [Great Lakes Echo 2-16-2026](#), [Spartan Newsroom 2-20-2026](#), [The Alpena News 2-21-2026](#) and [Midland Daily News 2-23-2026](#).
- Melissa Meyer, Teacher Education major, was [recognized by Talent Together](#) on their Facebook page for her work in the Black River Public School.
- CFRE's social media sites continue to grow, with 125% – 210% increases in follows, views, visits, and interactions this month.

Community Engagement

- On February 21, the Education and Outreach team partnered with the Outdoor Recreation and Leadership program to lead a guided snowshoeing hike at Ashmun Creek Trail. Around 15 participants attended and learned about wildlife tracks and practiced finding them on the trail. Participants were then invited to come to CFRE to visit the Dr. Constance Baker Great Lakes Discovery Center for activities related to wildlife tracks and winter adaptations.
- Twenty nine community members visited the GLDC on February 7 for a STEM day about eagle behavior in winter, making bird kites, and attempting the nest-building challenge.
- CFRE research technician Drew Heckman delivered a guest lecture in LSSU's Watersheds course, providing professional insights on stream water quality monitoring practices.
- Dr. Doubek and undergraduate students Eli Herriman and Brenden Conger hosted a zooplankton identification and sample processing workshop for two aquatic ecology research technicians with the Sault Tribe of Chippewa Indians. Eli and Brenden helped lead the plankton training, which was hosted at CFRE on February 20.
- Dr. Stith is facilitating a book study online for the Michigan Association of Mathematics Teacher Educators (Mi-AMTE). Professors from five different universities are sharing their insights and

practices on teaching mathematics and mathematics-methods courses through this ongoing study.

Operations and Infrastructure Projects

- CFRE is hosting several upcoming events for community partners including the Harbor Safety Committee, Wildlife First Aid Training with Headwaters North, and a 2-day training for the US Coast Guard.
- CFRE welcomed Nikki Storey, CEO of Headwaters North, to the Barch building. Nikki will be leasing an office in the upstairs collaboration suite.
- Using donor funds, CFRE is working with an external marketing consultant to create informational materials to communicate CFRE's work.
- Our Freshwater Innovation Hub has begun a collaboration with the School of Engineering faculty and students focusing on CFRE's MiWaterNet sensor network. The collaboration will help identify solutions to improve reliability and ease of use, increasing the potential of MiWaterNet technology as a consumer-oriented product. Additionally, we've continued to strengthen the partnership with Headwaters North and are working with them to produce marketing materials that highlight CFRE's equipment and facility capabilities for supporting research and innovation.

Appointments to Boards and Professional Organizations

- Dr. Brewer earned 'Certified Wildlife Biologist' status by The Wildlife Society.
- Dr. Jennifer Fager was appointed as a member of the Rural Pride Collective Coalition.
- Congratulations to Drs. Brewer, Sarda, and Ranson-Olsen for their successful applications to become CFRE Affiliate Faculty.

Scholarship Activity

- Silas Dunn and Cameron Leitz, CFRE Research Technicians, completed larval fish identification training at the USGS Great Lakes Science Center in Ann Arbor, MI. This training builds additional expertise and will support multiple grant-funded projects at CFRE.

College of Health & Emergency Responders

Academic Program Successes

- A graduate of our Criminal Justice and MCOLES law enforcement training program was directly involved in a serious and dangerous on-duty incident within their department. Our faculty learned about this incident when they received a note of deep appreciation for the preparation LSSU provided, sharing that they believed their training here played a critical role in helping protect themselves, their partner, and members of the community during the event.

Honors and Awards

- Professor Herb Henderson was honored by The Sault Area Public Schools as the “Helpful Teacher of the Month” for February 2026. As a Law Enforcement instructor and Chair of the School of Criminal Justice, Fire Science, and Emergency Services, Professor Henderson is commended for his dedication, adaptability, and student-centered approach, consistently supporting student success and career readiness. He is especially noted for building and sustaining strong community and postsecondary partnerships, including developing articulation agreements with Lake Superior State University that create early college and career pathways for students. In addition to his instructional and leadership responsibilities, he is recognized for his professionalism, collaborative spirit, and willingness to support program continuity, making a lasting impact on the school community.



Helpful
Teacher
of the Month

It is our pleasure to announce
HERB HENDERSON
Helpful Teacher of the Month
February 2026



Kellie Greener, CTE Director/Assistant Principal, is pleased to recognize Herbert Henderson as this month's Helpful Teacher of the Month. Mr. Henderson exemplifies dedication, adaptability, and a strong commitment to both students and our broader community.

As a Law Enforcement instructor, Mr. Henderson has demonstrated remarkable resilience through change, consistently maintaining a student-centered approach while adapting to evolving instructional and program needs. He develops strong, respectful relationships with students, helping them feel supported, motivated, and prepared for postsecondary and career success.

One of Mr. Henderson's most notable contributions is his work building and sustaining community and postsecondary partnerships. Through his leadership and close professional connections as Chair of the Law Enforcement Department, he has successfully developed articulation agreements with Lake Superior State University, providing students with meaningful pathways to continue their education and training starting as early as a student's junior year through the Early Middle College Program.

In addition to his instructional and leadership responsibilities, Mr. Henderson is always willing to step in and support the program as needed, including assisting with internal subbing to ensure continuity for students and staff.

Mr. Henderson's commitment, professionalism, and collaborative spirit make a lasting impact on our school community. We are grateful for his dedication and are proud to recognize him as Helpful Teacher of the Month.

Community Engagement

- The School of Nursing hosted an Empathy Dementia Simulation for *NURS 213 Fundamentals of Nursing* BSN students on February 23 and the Bay Mills Community College (BMCC) Licensed Practical Nursing (LPN) students on February 19, offering a powerful hands-on learning experience through the Second Wind Dreams Virtual Dementia Tour. The School of Nursing obtained this program in 2017 through grant-funding, this evidence-based program created by P.K. Beville allows participants to experience the sensory and physical challenges of dementia firsthand. Using specialized goggles, headphones, and gloves, students navigate everyday tasks while simulating cognitive decline. The School of Nursing will continue offering this transformative experience to our students and regional partners such as BMCC. Learn more about the Virtual Dementia Tour here: <https://secondwind.org/programs/virtual-dementia-tour/>
- The Katie Robinson Memorial Showcase is a year-round, community-based service and recruitment initiative, collaboratively organized with Katie Robinson's parents, Kevin and Nancy Robinson, and supported by partners including the U.S. Coast Guard, the City of Sault Ste. Marie, the Sault Area Convention and Visitors Bureau, the Sault Hockey Association, and others. To date, nearly \$14,000 has been raised for the Diane Pepler Resource Center, with additional scholarship donations in Katie's name continuing through the Chippewa County Community Foundation.

The Katie Robinson Memorial Showcase hosted 23 hockey teams and generated significant campus and community engagement. The event brought more than 860 attendees to the February 13 LSSU Division I men's hockey game, creating a notably energetic game environment, and over 800 participants attended the showcase event in the Student Activity Center prior to the game. Student groups—including the School of Nursing, and the Business Investment Club—engaged directly with athletes and families, with Admissions also hosting a recruitment table.

On February 14, one thousand attendees participated in the LSSU ACHA D1 women's hockey game which was part of the Katie Robinson Memorial Showcase. As a direct recruitment outcome, at least three applications were submitted and one women's hockey student-athlete committed to LSSU during the event, with potential for additional interest.

Conference Presentations

- Two groups of Kinesiology majors will be presenting their research at the upcoming Michigan American College of Sports Medicine (MIACSM) Conference on March 19-20. The students have been collaborating with Dr. Eric Statt on their research; both working with student athletes at LSSU.
 - Brooke Rivers, Joe Kasprzak, and Vanessa Swerdon—*Descriptions of on-ice fitness parameters through on ice skills assessment in club-level, collegiate hockey players*
 - Grace Kreps—*Analysis of Sprint Velocity Trends in NCAA Division II Middle-Distance Runners*
- Two Senior Nursing students (Allie Shaw and Abigail Johnson), presented their health education project on Marijuana Use in Pregnancy to attendees at the Region 1 Perinatal Quality Collaborative quarterly meeting. The goals of the Michigan Perinatal Quality Collaborative are to convene perinatal partners in regular meetings to address the most significant concerns within each region through focused, individualized attention; improve birth outcomes for mothers, infants, and families through data-driven quality improvement efforts tailored to the strengths and challenges of each region; and authentically engage families and communities by seeking and incorporating guidance from families statewide and within specific Regional Perinatal Quality Collaborative (RPQC) catchment areas.

Upcoming Events

- Tuesday, March 17, 7:00 pm, Career Services Resource Room—Midterm Reset Workshop for Students
- Thursday, March 19, 12:30 pm, CETAL—Lunch & Learn: Moodle Online Standards for Accessibility with Sara Devaprasad & Barb Searight
- Thursday, March 19, 5:30 pm, Library Commons—Film screening “All too Clear” & “Sacred Waters” followed by a panel discussion
- Friday, March 20, 9:00 am-2:00 pm, Library Commons—Reentry simulation for prison to mainstream society transitions
- Monday, March 23, 11:00 am, Career Services Resource Center—Resume and Cover Letter Workshop (includes LinkedIn tips)
- Tuesday, March 24, CAS—Dr. Joni Lindsey and Dr. Rob Kipka will host the Talk Math 2 Me Microsymposium on campus. LSSU students and professors will deliver short presentations on mathematics-related topics and experiments during this event.
- Tuesday, March 24, 11:00 am, Career Services Resource Center—Interview Best Practices Workshop

- Wednesday, March 25, 1:00 pm, Career Service Resource Center—Drop-In Mock Interviews
- Wednesday, March 25, 4:00 pm, Career Services Resources Room—Fear of Public Speaking Workshop with Adam St. John
- Wednesday, March 25, through Sunday, March 29, Arts Center—The Stonewater Rapture
- Thursday, March 26, 3:00 pm-6:00 pm, Cisler Center—Spring Career Fair
- Thursday, April 2, 12:30 pm, CETAL—Lunch & Learn: Near Peer with Jon Sommers & Judy Hering
- Friday, April 3, through Saturday, April 4, Arts Center—Missoula Children’s Theatre
- Monday, April 6, 11:00 am, Library Commons—Cookie Baking Contest
- Wednesday, April 8, 6:30 pm, Library Commons—Scholar Series: Titanic and Her Local Ties with Emily Cummings
- Thursday, April 9, 7:00 pm, Arts Center—Reduced Shakespeare Company Presents All the Great Books (Abridged)!
- Wednesday, April 15, 7:00 pm, Library Commons—Scholar Series: Ted Walker presents “Leonard, Caravaggio & the Presentation of Women in Renaissance Art”
- Thursday, April 16, 12:30 pm, CETAL—Lunch & Learn: N.E.A.T. (Nurturing Engaged and Active Teaching)
- Friday, April 17, 7:00 pm, Arts Center—Soo’s Got Talent