



LAKE SUPERIOR STATE UNIVERSITY

Sault Ste. Marie, MI 49783 • USA

VEHICLE SYSTEMS OPTION



In-class knowledge can be complemented by extra-curricular activities such as participation in a Mini Baja off-road vehicle competition.

The vehicle systems option offers a solid background for those seeking a future in one of the surface vehicle industries:

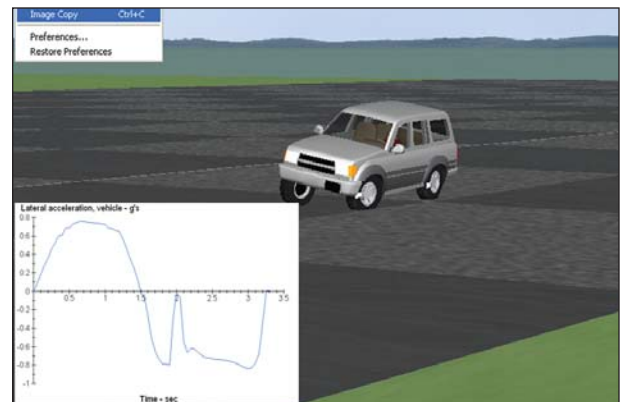
- Automotive
- Rail
- On-Highway (Heavy Trucks)
- Off-Road & Recreational
- Agriculture & Construction
- Other Industries

Learn to design, analyze and test vehicles

The vehicle systems option provides the mechanical engineering student with a firm grasp of the fundamentals that apply to a variety of surface vehicles — whether on the road, terrain or rails.

The option focuses on the performance of vehicles including their handling, acceleration, ride, towing power, and noise emission.

You'll learn how to project vehicle performance through analytical skills and computer simulation, how to test using modern instrumentation, and how to design for it using a perspective of the vehicle as a complete system. As you progress, you'll develop a competence with specific sub-systems and parts.



CARSIM, a modern computer simulation tool, is used to model vehicles — such as the rollover stability of an SUV.

Get instruction from industry professionals

The "cornerstone" course in the vehicle systems option is *EGME410: Vehicle Development & Test* in which students benefit from an early contact with industry. The course includes guest instructors working in the automotive industry as test engineers. They bring a vast experience in vehicle dynamics and track testing, as well as up-to-date knowledge of technological directions in the industry.

The balance of the instruction is done by full-time faculty who view teaching as a priority. You'll never get a part-time teaching assistant.



Vehicles include more than just automobiles. You'll receive instruction from industrial professionals as well as our teaching-oriented faculty.

Your degree transcript will show you having an emphasis in Vehicle Systems



Students will learn concepts such as the active leaning systems incorporated by high-speed trains which are designed by railway vehicle engineers.

Vehicle Systems Option

Courses include:

- Geometric Dimensioning & Tolerancing
- Vehicle Development & Testing
- Vehicle Dynamics
- Vibrations & Noise Control
- Data Acquisition & Analysis



LSSU students test vehicle components in one of a variety of labs.

For more program information, contact the School of Engineering & Technology

Phone: 906-635-2207 | E-mail: engineering@lssu.edu

Robert Hildebrand, Chair

Mechanical Engineering & Manufacturing Engineering Technology906-635-2139

E-mail: rhildebrand@lssu.edu

Check us out on the web at
<http://www.lssu.edu/eng>

If you have any questions about LSSU or would like to visit and take a campus tour, please contact:

Admissions Office

888-800-LSSU, ext. 2231 (toll-free)

or 906-635-2231 (direct)

E-mail: admissions@lssu.edu

on the web: <http://www.lssu.edu>

The University is an equal opportunity employer and educator and prohibits discrimination, including harassment, on the basis of race, color, national origin or ancestry, gender, age, disability, religion, height, weight, sexual preference, marital status, or veteran status.